



Automotive Experience Division
EDI Implementation Guideline
Delivery Schedule (DELFOR)

Table of Contents

Document Change Log.....	4
Requirement Designations in Guide.....	5
AD96AENVDELFOR Adient D96A DELFOR Envelope Structure.....	6
Segment: UNA Service String advice	7
Segment: UNB Interchange Header.....	8
Segment: UNG Functional Group Header.....	10
Segment: UNE Functional Group Trailer.....	12
Segment: UNZ Interchange Trailer	13
DELFOR Delivery Schedule Message.....	14
Introduction.....	14
Branching Diagram	14
Loop/Segment Table	19
Segment: UNH Message Header.....	24
Segment: BGM Beginning of Message.....	26
Segment: DTM Date/Time/Period - Message Creation Date.....	27
Segment: DTM Date/Time/Period - Horizon Start Date	28
Segment: DTM Date/Time/Period - Horizon End Date	29
Segment: RFF Reference.....	31
Segment: NAD Name and Address - Seller (Supplier).....	33
Segment: NAD Name and Address - Buyer (Adient Plant).....	36
Segment: UNS Section Control	38
Segment: NAD Name and Address - Consignee (Ship To).....	40
Segment: LIN Line Item.....	43
Segment: PIA Additional Product Id	45
Segment: IMD Item Description	48
Segment: LOC Place/Location Identification - Adient Dock Code.....	49
Segment: LOC Place/Location Identification - Other Internal Adient Location.....	51
Segment: DTM Date/Time/Period - Calculation Date.....	53
Segment: DTM Date/Time/Period - Finished Goods Go-Ahead End Date	54
Segment: DTM Date/Time/Period - Raw Materials Go-Ahead End Date.....	55
Segment: RFF Reference - Purchase Order Number.....	57

Segment: QTY Quantity (12) - Receipt Discrete Quantity	59
Segment: RFF Reference - Receipt Despatch Advice Number	61
Segment: DTM Date/Time/Period - Receipt Date.....	62
Segment: QTY Quantity (70) - Last Receipt Cumulative Quantity.....	64
Segment: QTY Quantity (78) - Scheduled Cumulative Quantity	66
Segment: QTY Quantity (83) - Backorder Quantity.....	68
Segment: SCC Scheduling Conditions	69
Segment: DTM Date/Time/Period - Latest Delivery or Pickup Date/Time.....	71
Segment: DTM Date/Time/Period - Earliest Delivery or Pickup Date/Time	72
Segment: QTY Quantity (84) - Urgent Delivery Quantity.....	74
Segment: SCC Scheduling Conditions	75
Segment: DTM Date/Time/Period - Latest Delivery or Pickup Date/Time.....	77
Segment: DTM Date/Time/Period - Earliest Delivery or Pickup Date/Time	78
Segment: QTY Quantity (113) - Delivery Quantity	80
Segment: SCC Scheduling Conditions	81
Segment: DTM Date/Time/Period - Latest Delivery or Pickup Date/Time.....	83
Segment: DTM Date/Time/Period - Earliest Delivery or Pickup Date/Time	84
Segment: PAC Package	86
Segment: QTY Quantity (52) - Per Pack	88
Segment: UNS Section Control	89
Segment: UNT Message Trailer	90
DELFOR Delivery Schedule Examples.....	91

Document Change Log

Version	Date	Description	Author
1.0	2007-01-18	Creation	Hans-Ulrich Berger
1.5	2007-10-02	Revision and change of CI	Marc Tillmann
1.6	2009-09-18	Enhancement	Hans-Ulrich Berger
1.7	2011-09-07	Changed RFF+ON 1156 to mandatory	Tim Diedershagen
1.8	2011-09-14	Added qualifier 153 and 154 to DTM, Position 0120 (now position 0360)	Ralf Gröbke
1.9	2011-09-28	Added option for SCC 2017 plus description and example	Ralf Gröbke
2.0	2011-12-04	Detailed NAD segment for qualifier SU (supplier DUNS) – <i>segment now removed from spec – L. Kreimes</i>	Ralf Gröbke
2.1	2011-12-22	UNB.0020 is hardcoded to 1. This has been replaced in the description. <i>The GXS translator is generating an interchange control number other than 1 – L. Kreimes.</i>	Ralf Gröbke
2.2	2012-06-01	PAC segment updated	Raghava Bandrupalli
2.3	2012-06-14	PAC segment updated	Raghava Bandrupalli
2.4	2012-07-12	PAC segment updated	Raghava Bandrupalli
2.5	2012-10-04	SCC segment updated	Raghava Bandrupalli
2.6	2013-04-15	PIA segment updated with Engineering Change Level	Stijn Daerden
2.7	2013-08-17	Changed DTM+63 and DTM+64 segments date format to include pickup times.	Stijn Daerden
2.8	2014-03-12	Added qualifiers 158 & 159 to DTM Position 0030; modified description of DTM+154 Position 0360; added QTY+84 Position 0480.	Stijn Daerden
2.9	2014-06-02	Recreated DELFOR guide using EDISIM which caused segment position numbers to be reordered; placed the PAC segment in the proper location in the guide; modified LOC segment Position 0350 to be optional; modified description for DTM+153 segment Position 0360; updated data examples to have more recent dates	Laurie Kreimes
2.10	2014-10-10	Modified the data example on each segment page to match the Example 1 data. Modified the segment table reference for the SG12(78) segment, removing the reference to “Prior Cum Qty Required”. Modified the SG12(78) segment page, removing the reference to “Prior Cum Qty Required” and modified the “Notes to Trading Partner” to reflect the correct information for this segment. Modified the Example 1 data to reflect the QTY(70) and QTY(78) quantities. Modified the Example 2 data to reflect the correct QTY(78) quantity and corrected the last 3 QTY(113) quantities to be a multiple of the standard pack quantity. Modified the UNA Data Example to reflect a	Laurie Kreimes

		properly formatted UNA segment.	
2.11	2016-10-01	Modified JCI or Johnson Controls references to be Adient. Removed Johnson Controls logo and added Adient logo.	Laurie Kreimes
2.12	2025-03-06	Added SCC qualifiers for FAB and RAW quantity. Added DTM 206/194 for start and end Date for FAB/RAW quantity	Maninder S Sudan

Requirement Designations in Guide

- C = Conditional
- M = Mandatory
- R = Required

Adient D96A DELFOR Envelope Structure

Introduction:

The Service String Advice, UNA, and the service segments UNB to UNZ shall appear in the below stated order in an interchange. There may be several functional groups or messages within an interchange and several messages in a functional group. A message consists of segments.

<u>Adient Attributes</u>	<u>Pos. No.</u>	<u>Seg. ID</u>	<u>Name</u>	<u>Base Attributes</u>	<u>Max.Use</u>	<u>Group Repeat</u>	<u>Notes and Comments</u>
	0005	UNA	Service String advice	C	1		
M	0010	UNB	Interchange Header	M	1		
	0020	UNG	Functional Group Header	C	1		
	0030	UNE	Functional Group Trailer	C	1		
M	0040	UNZ	Interchange Trailer	M	1		

Segment: **UNA** Service String advice
Position: 0005
Group:
Level: 0
Usage: Conditional (Optional)
Max Use: 1
Purpose: To define the characters selected for use as delimiters and indicators in the rest of the interchange that follows:

The specifications in the Service string advice take precedence over the specifications for delimiters etc. in segment UNB. See clause 4.

When transmitted, the Service string advice must appear immediately before the Interchange Header (UNB) segment and begin with the upper case characters UNA immediately followed by the six characters selected by the sender to indicate, in sequence, the following functions:

Dependency Notes:
Semantic Notes:
Comments:
Notes:

Notes to Trading Partner

The UNA segment is optional in an EDIFACT interchange. The specifications in the UNA segment define the characters used as separators and indicators for the interchange. This segment will only be sent if the interchange contains non-standard separator characters.

Data Examples

UNA+>+*+.+\++~

Data Element Summary

<u>User</u>	<u>Data</u>	<u>Component</u>	<u>Attributes</u>
<u>Attribute</u>	<u>Element</u>	<u>Element</u> <u>Name</u>	
M	UNA1	COMPONENT DATA ELEMENT SEPARATOR	M an1
M	UNA2	DATA ELEMENT SEPARATOR	M an1
M	UNA3	DECIMAL NOTATION	M an1
		Notes to Trading Partner:	
		Comma or full stop	
M	UNA4	RELEASE INDICATOR	M an1
		Notes to Trading Partner:	
		If not used, insert space character	
M	UNA5	RESERVED FOR FUTURE USE	M an1
		Notes to Trading Partner:	
		Insert space character	
M	UNA6	SEGMENT TERMINATOR	M an1

Segment: UNB Interchange Header
Position: 0010
Group:
Level: 0
Usage: Mandatory
Max Use: 1
Purpose: To start, identify and specify an interchange
Dependency Notes:
Semantic Notes:
Comments:
Business Rules: Variable Name: UNB
Notes: **Data Examples**

UNB+UNOA:3+SENDER-ID+RECEIVER-ID+140607:0142+562++DELFOR

Data Element Summary

User	Data	Component		
<u>Attribute</u>	<u>Element</u>	<u>Element</u>	<u>Name</u>	<u>Attributes</u>
M	S001		SYNTAX IDENTIFIER	M
			Identification of the agency controlling the syntax and indication of syntax level.	
M		0001	Syntax identifier	M a4
			Coded identification of the agency controlling a syntax and syntax level used in an interchange. Refer to D.96A Data Element Dictionary for acceptable code values.	
M		0002	Syntax version number	M n1
			Version number of the syntax identified in the syntax identifier (0001).	
M	S002		INTERCHANGE SENDER	M
			Identification of the sender of the interchange.	
M		0004	Sender identification	M an..35
			Name or coded representation of the sender of a data interchange. Notes to Trading Partner: The sender identification can be the company EAN or DUNS code or a company-specific code.	
		0007	Partner identification code qualifier	C an..4
			Qualifier referring to the source of codes for the identifiers of interchanging partners. Notes to Trading Partner: Qualifiers to be determined by trading partner relationship. Refer to D.96A Data Element Dictionary for acceptable code values.	
		0008	Address for reverse routing	C an..14
			Address specified by the sender of an interchange to be included by the recipient in the response interchanges to facilitate internal routing.	
M	S003		INTERCHANGE RECIPIENT	M
			Identification of the recipient of the interchange.	
M		0010	Recipient identification	M an..35
			Name or coded representation of the recipient of a data interchange. Notes to Trading Partner: The receiver identification can be the company EAN or DUNS code or a company specific code.	
		0007	Partner identification code qualifier	C an..4

			Qualifier referring to the source of codes for the identifiers of interchanging partners.
			Notes to Trading Partner:
			Qualifiers to be determined by trading partner relationship.
			Refer to D.96A Data Element Dictionary for acceptable code values.
		0014	Routing address C an..14
			Address specified by the recipient of an interchange to be included by the sender and used by the recipient for routing of received interchanges inside his organization.
M	S004		DATE AND TIME OF PREPARATION M
			Date and time of preparation of the interchange.
M		0017	Date of preparation M n6
			Local date when an interchange or a functional group was prepared.
			Notes to Trading Partner:
			Format: YYMMDD
M		0019	Time of preparation M n4
			Local time of day when an interchange or a functional group was prepared.
			Notes to Trading Partner:
			Format: HHMM
M	0020		INTERCHANGE CONTROL REFERENCE M an..14
			Unique reference assigned by the sender to an interchange.
	S005		RECIPIENTS REFERENCE PASSWORD C
			Reference or password as agreed between the communicating partners.
M		0022	Recipient reference/password M an..14
			Unique reference assigned by the recipient to the data interchange or a password to the recipient's system or to a third party network as specified in the partners interchange agreement.
		0025	Recipient reference/password qualifier C an2
			Qualifier for the recipient's reference or password.
			Refer to D.96A Data Element Dictionary for acceptable code values.
Must Use	0026		APPLICATION REFERENCE C an..14
			Identification of the application area assigned by the sender, to which the messages in the interchange relate e.g. the message identifier if all the messages in the interchange are of the same type.
	0029		PROCESSING PRIORITY CODE C a1
			Code determined by the sender requesting processing priority for the interchange.
			Refer to D.96A Data Element Dictionary for acceptable code values.
	0031		ACKNOWLEDGEMENT REQUEST C n1
			Code determined by the sender for acknowledgement of the interchange.
			Refer to D.96A Data Element Dictionary for acceptable code values.
	0032		COMMUNICATIONS AGREEMENT ID C an..35
			Identification by name or code of the type of agreement under which the interchange takes place.
	0035		TEST INDICATOR C n1
			Indication that the interchange is a test.
			Refer to D.96A Data Element Dictionary for acceptable code values.

Segment: **UNG** Functional Group Header
Position: 0020
Group:
Level: 0
Usage: Conditional (Optional)
Max Use: 1
Purpose: To head, identify and specify a Functional Group
Dependency Notes:
Semantic Notes:
Comments:
Business Rules: Variable Name: UNG
Notes: **Notes to Trading Partner**

This segment is optional and is used to send additional sender/receiver ID information.

Data Examples

UNG+DELFOR+SNDGRPID+RCVRGRPID+140607:0142+562+UN+D:96A'

Data Element Summary

<u>User</u>	<u>Data</u>	<u>Component</u>	<u>Name</u>	<u>Attributes</u>
<u>Attribute</u>	<u>Element</u>	<u>Element</u>		
M	0038		FUNCTIONAL GROUP IDENTIFICATION	M an..6
			Identification of the one type of messages in a functional group.	
M	S006		APPLICATION SENDER IDENTIFICATION	M
			Identification of the sender's division, department etc. from which a group of messages is sent.	
M		0040	Application sender identification	M an..35
			Name or code identifying the originating division, department etc. within the sender's organization.	
			Notes to Trading Partner:	
			The sender identification can be the company EAN or DUNS code or a company specific code.	
		0007	Partner identification code qualifier	C an..4
			Qualifier referring to the source of codes for the identifiers of interchanging partners.	
			Notes to Trading Partner:	
			Qualifiers to be determined by trading partner relationship.	
			Refer to D.96A Data Element Dictionary for acceptable code values.	
M	S007		APPLICATION RECIPIENTS IDENTIFICATION	M
			Identification of the recipient's division, department etc. for which a group of messages is intended.	
M		0044	Application recipient's identification	M an..35
			Name or code identifying the division, department etc. within the recipient's organization for which the group of messages is intended.	
			Notes to Trading Partner:	
			The receiver identification can be the company EAN or DUNS code or a company specific code.	

		0007	Partner identification code qualifier	C an..4
			Qualifier referring to the source of codes for the identifiers of interchanging partners.	
			Notes to Trading Partner:	
			Qualifiers to be determined by trading partner relationship.	
			Refer to D.96A Data Element Dictionary for acceptable code values.	
M	S004		DATE AND TIME OF PREPARATION	M
			Date and time of preparation of the interchange.	
M		0017	Date of preparation	M n6
			Local date when an interchange or a functional group was prepared.	
			Notes to Trading Partner:	
			Format: YYMMDD	
M		0019	Time of preparation	M n4
			Local time of day when an interchange or a functional group was prepared.	
			Notes to Trading Partner:	
			Format: HHMM	
M	0048		FUNCTIONAL GROUP REFERENCE NUMBER	M an..14
			Reference number for the functional group assigned by and unique within the sender's division, department etc.	
M	0051		CONTROLLING AGENCY	M an..2
			Code identifying the agency controlling the specification, maintenance and publication of the message type.	
			Refer to D.96A Data Element Dictionary for acceptable code values.	
M	S008		MESSAGE VERSION	M
			Specification of the type of messages in the functional group.	
M		0052	Message type version number	M an..3
			Version number of a message type.	
M		0054	Message type release number	M an..3
			Release number within the current message type version number (0052).	
		0057	Association assigned code	C an..6
			Code, assigned by the association responsible for the design and maintenance of the message type concerned, which further identifies the message.	
	0058		APPLICATION PASSWORD	C an..14
			Password to the recipient's division, department or sectional system.	

Segment: **UNE** Functional Group Trailer
Position: 0030
Group:
Level: 0
Usage: Conditional (Optional)
Max Use: 1
Purpose: To end and check the completeness of a Functional Group
Dependency Notes:
Semantic Notes:
Comments:
Notes:

Data Examples

UNE+1+562'

Data Element Summary

<u>User Attribute</u>	<u>Data Element</u>	<u>Component Element</u>	<u>Name</u>	<u>Attributes</u>
M	0060		NUMBER OF MESSAGES	M n..6
			A count of the number of messages in a functional group.	
			Notes to Trading Partner:	
			This field will contain the count of the number of messages present in the data file.	
M	0048		FUNCTIONAL GROUP REFERENCE NUMBER	M an..14
			Reference number for the functional group assigned by and unique within the sender's division, department etc.	
			Notes to Trading Partner:	
			This value will match what is sent in the UNG_0048 element.	

Segment: UNZ Interchange Trailer
Position: 0040
Group:
Level: 0
Usage: Mandatory
Max Use: 1
Purpose: To end and check the completeness of an interchange.
Dependency Notes:
Semantic Notes:
Comments:
Notes:

Data Examples

UNZ+1+562'

Data Element Summary

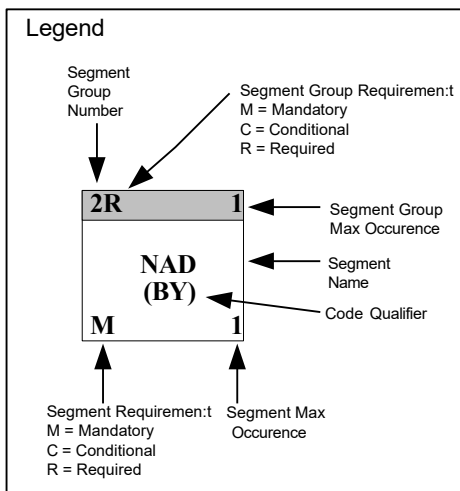
<u>User Attribute</u>	<u>Data Element</u>	<u>Component Element</u>	<u>Name</u>	<u>Attributes</u>
M	0036		INTERCHANGE CONTROL COUNT	M n..6
			Count either of the number of messages or, if used, of the number of functional groups in an interchange.	
			Notes to Trading Partner:	
			This field will contain the count of the number of interchanges present in the data file.	
M	0020		INTERCHANGE CONTROL REFERENCE	M an..14
			Unique reference assigned by the sender to an interchange.	
			Notes to Trading Partner:	
			This value will match what is sent in the UNB_0020 element.	

DELFOR Delivery Schedule Message

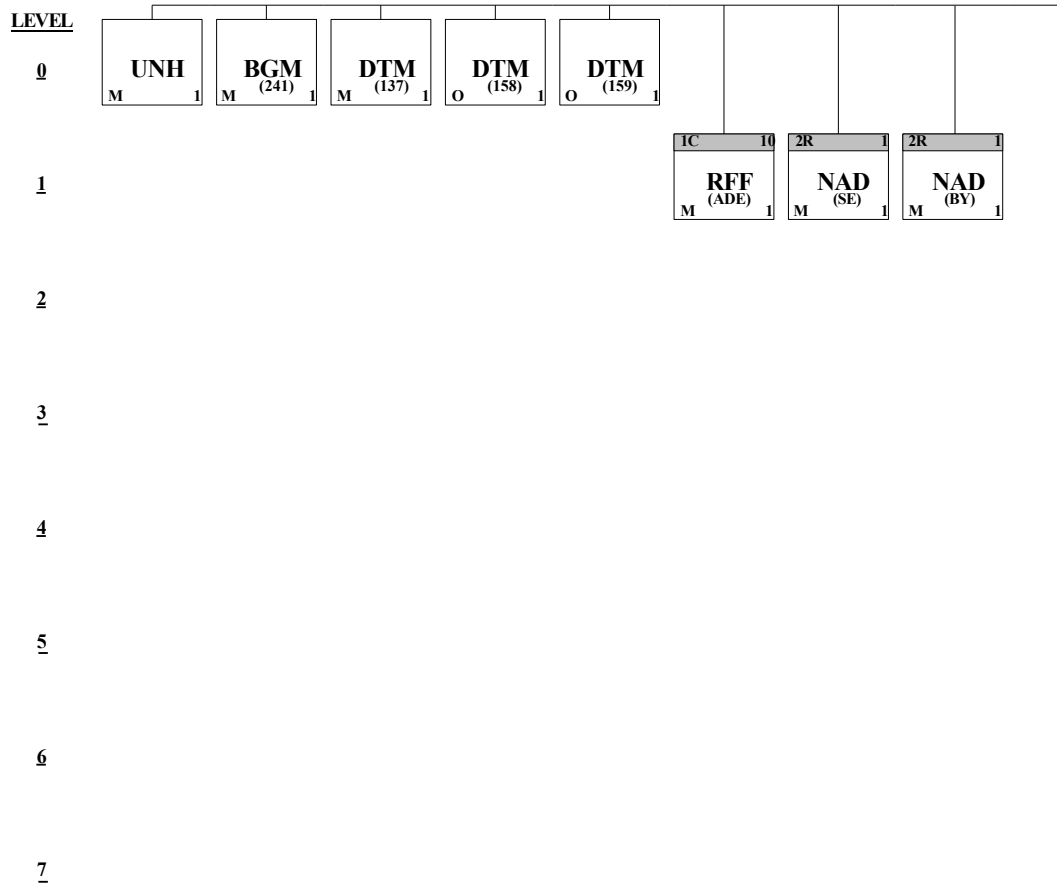
Introduction

A message from buyer to supplier giving product requirements regarding details for short term delivery instructions and/or medium to long term product/service forecast for planning purposes according to conditions set out in a contract or order. The message can be used to authorize the commitment of labour and materials resources.

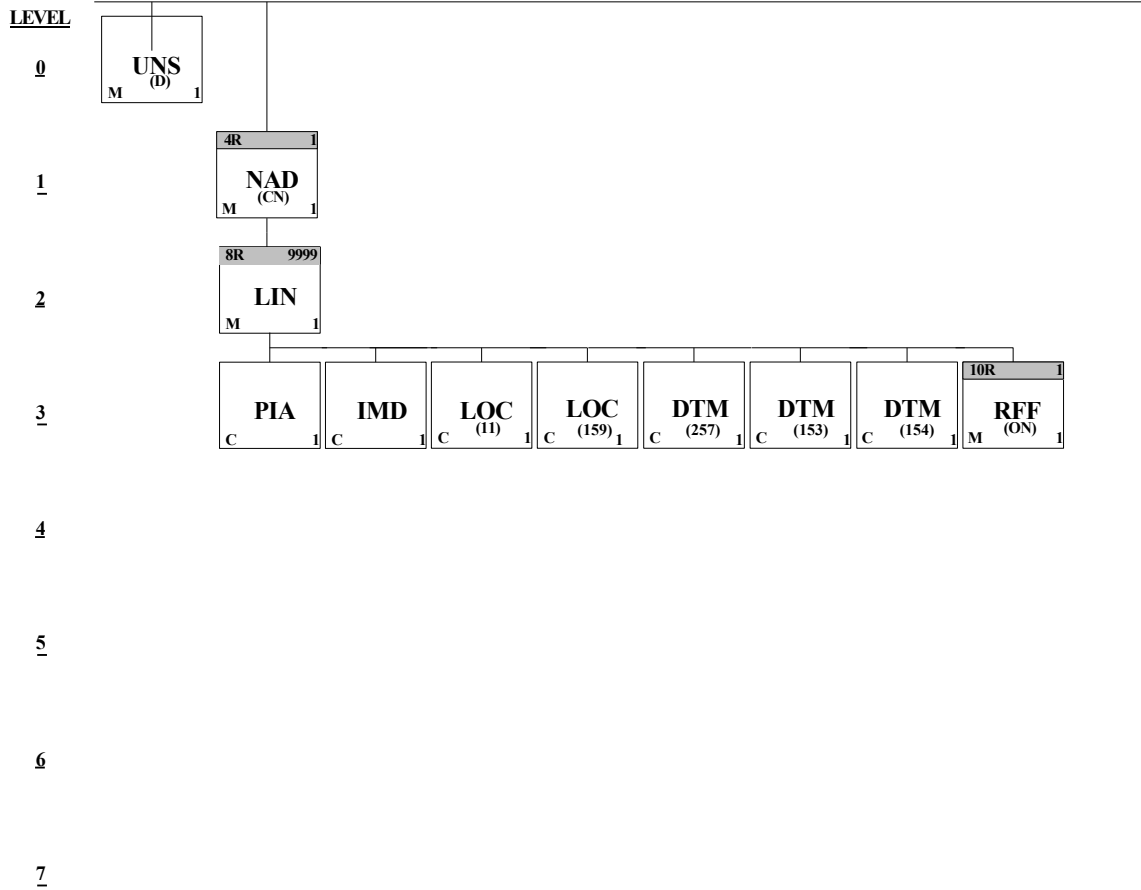
Branching Diagram



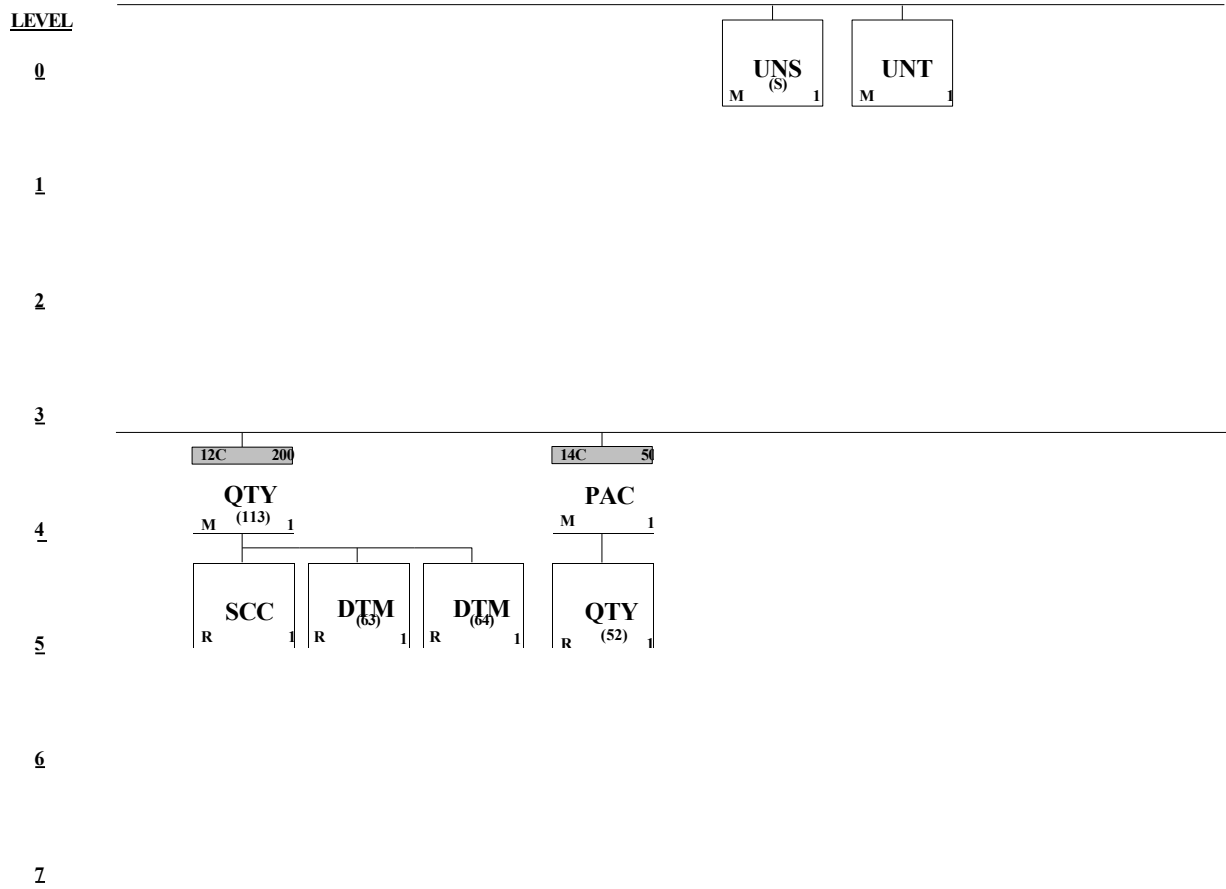
Branching Diagram (continued)



Branching Diagram (continued)



Branching Diagram (continued)



Loop/Segment Table

Heading Section:

<u>Adient Attributes</u>	<u>Pos. No.</u>	<u>Seg. ID</u>	<u>Name</u>	<u>Base Attributes</u>	<u>Max.Use</u>	<u>Group Repeat</u>	<u>Notes and Comments</u>
M	0010	UNH	Message Header	M	1		
M	0020	BGM	Beginning of Message	M	1		
M	0030	DTM	Date/Time/Period - Message Creation Date	M	1		
	0030	DTM	Date/Time/Period - Horizon Start Date	O	1		
	0030	DTM	Date/Time/Period - Horizon End Date	O	1		
	0040		Segment Group 1: RFF-DTM	C		10	
M	0050	RFF	Reference	M	1		
Not Used	0060	DTM	Date/Time/Period	C	1		
Must Use	0070		Segment Group 2: NAD-LOC-SG3	C		1	
M	0080	NAD	Name and Address - Seller (Supplier)	M	1		
Not Used	0090	LOC	Place/Location Identification	C	10		
Not Used	0100		Segment Group 3: CTA-COM	C		5	
Not Used	0110	CTA	Contact Information	M	1		
Not Used	0120	COM	Communication Contact	C	5		
Must Use	0070		Segment Group 2: NAD-LOC-SG3	C		1	
M	0080	NAD	Name and Address - Buyer (Adient Plant)	M	1		
Not Used	0090	LOC	Place/Location Identification	C	10		
Not Used	0100		Segment Group 3: CTA-COM	C		5	
Not Used	0110	CTA	Contact Information	M	1		
Not Used	0120	COM	Communication Contact	C	5		

Section Control:

<u>Adient Attributes</u>	<u>Pos. No.</u>	<u>Seg. ID</u>	<u>Name</u>	<u>Base Attributes</u>	<u>Max.Use</u>	<u>Group Repeat</u>	<u>Notes and Comments</u>
M	0130	UNS	Section Control	M	1		

Detail Section:

<u>Adient Attributes</u>	<u>Pos. No.</u>	<u>Seg. ID</u>	<u>Name</u>	<u>Base Attributes</u>	<u>Max.Use</u>	<u>Group Repeat</u>	<u>Notes and Comments</u>
Must Use	0140		Segment Group 4: NAD-LOC-FTX-SG5-SG6-SG7-SG8	C		1	
M	0150	NAD	Name and Address - Consignee (Ship To)	M	1		
Not Used	0160	LOC	Place/Location Identification	C	10		
Not Used	0170	FTX	Free Text	C	5		
Not Used	0180		Segment Group 5: DOC-DTM	C		10	
Not Used	0190	DOC	Document/Message Details	M	1		
Not Used	0200	DTM	Date/Time/Period	C	10		
Not Used	0210		Segment Group 6: CTA-COM	C		5	
Not Used	0220	CTA	Contact Information	M	1		
Not Used	0230	COM	Communication Contact	C	5		
Not Used	0240		Segment Group 7: TDT-DTM	C		10	

Not Used	0250	TDT	Details of Transport	M	1
Not Used	0260	DTM	Date/Time/Period	C	5
Must Use	0270		Segment Group 8: LIN-PIA-IMD-MEA-ALI-GIN-GIR-LOC-DTM-FTX-SG9-SG10-SG11-SG12-SG14	C	9999
M	0280	LIN	Line Item	M	1
	0290	PIA	Additional Product Id	C	1
	0300	IMD	Item Description	C	1
Not Used	0310	MEA	Measurements	C	5
Not Used	0320	ALI	Additional Information	C	5
Not Used	0330	GIN	Goods Identity Number	C	100
Not Used	0340	GIR	Related Identification Numbers	C	100
	0350	LOC	Place/Location Identification - Adient Dock Code	C	1
	0350	LOC	Place/Location Identification - Other Internal Adient Location	C	1
	0360	DTM	Date/Time/Period - Calculation Date	C	1
	0360	DTM	Date/Time/Period - Finished Goods Go-Ahead End Date	C	1
	0360	DTM	Date/Time/Period - Raw Materials Go-Ahead End Date	C	1
Not Used	0370	FTX	Free Text	C	5
Not Used	0380		Segment Group 9: CTA-COM	C	5
Not Used	0390	CTA	Contact Information	M	1
Not Used	0400	COM	Communication Contact	C	5
Must Use	0410		Segment Group 10: RFF-DTM	C	1
M	0420	RFF	Reference - Purchase Order Number	M	1
Not Used	0430	DTM	Date/Time/Period	C	1
Not Used	0440		Segment Group 11: TDT-DTM	C	10
Not Used	0450	TDT	Details of Transport	M	1
Not Used	0460	DTM	Date/Time/Period	C	5
	0470		Segment Group 12: QTY-SCC-DTM-SG13	C	3
M	0480	QTY	Quantity (12) - Receipt Discrete Quantity	M	1
Not Used	0490	SCC	Scheduling Conditions	C	1
Not Used	0500	DTM	Date/Time/Period	C	2
	0510		Segment Group 13: RFF-DTM	C	1
M	0520	RFF	Reference - Receipt Despatch Advice Number	M	1
Must Use	0530	DTM	Date/Time/Period - Receipt Date	C	1
	0470		Segment Group 12: QTY-SCC-DTM-SG13	C	1
M	0480	QTY	Quantity (70) - Last Receipt Cumulative Quantity	M	1
Not Used	0490	SCC	Scheduling Conditions	C	1
Not Used	0500	DTM	Date/Time/Period	C	2
Not Used	0510		Segment Group 13: RFF-DTM	C	10
Not Used	0520	RFF	Reference	M	1
Not Used	0530	DTM	Date/Time/Period	C	1
	0470		Segment Group 12: QTY-SCC-DTM-SG13	C	1
M	0480	QTY	Quantity (78) - Scheduled Cumulative Quantity	M	1

Not Used	0490	SCC	Scheduling Conditions	C	1
Not Used	0500	DTM	Date/Time/Period	C	2
Not Used	0510		Segment Group 13: RFF-DTM	C	10
Not Used	0520	RFF	Reference	M	1
Not Used	0530	DTM	Date/Time/Period	C	1
	0470		Segment Group 12: QTY-SCC-DTM-SG13	C	1
M	0480	QTY	Quantity (83) - Backorder Quantity	M	1
Must Use	0490	SCC	Scheduling Conditions	C	1
Must Use	0500	DTM	Date/Time/Period - Latest Delivery or Pickup Date/Time	C	1
Must Use	0500	DTM	Date/Time/Period - Earliest Delivery or Pickup Date/Time	C	1
Not Used	0510		Segment Group 13: RFF-DTM	C	10
Not Used	0520	RFF	Reference	M	1
Not Used	0530	DTM	Date/Time/Period	C	1
	0470		Segment Group 12: QTY-SCC-DTM-SG13	C	1
M	0480	QTY	Quantity (84) - Urgent Delivery Quantity	M	1
Must Use	0490	SCC	Scheduling Conditions	C	1
Must Use	0500	DTM	Date/Time/Period - Latest Delivery or Pickup Date/Time	C	1
Must Use	0500	DTM	Date/Time/Period - Earliest Delivery or Pickup Date/Time	C	1
Not Used	0510		Segment Group 13: RFF-DTM	C	10
Not Used	0520	RFF	Reference	M	1
Not Used	0530	DTM	Date/Time/Period	C	1
	0470		Segment Group 12: QTY-SCC-DTM-SG13	C	200
M	0480	QTY	Quantity (113) - Delivery Quantity	M	1
Must Use	0490	SCC	Scheduling Conditions	C	1
Must Use	0500	DTM	Date/Time/Period - Latest Delivery or Pickup Date/Time	C	1
Must Use	0500	DTM	Date/Time/Period - Earliest Delivery or Pickup Date/Time	C	1
Not Used	0510		Segment Group 13: RFF-DTM	C	10
Not Used	0520	RFF	Reference	M	1
Not Used	0530	DTM	Date/Time/Period	C	1
	0540		Segment Group 14: PAC-MEA-QTY-DTM- SG15-SG16	C	50
M	0550	PAC	Package	M	1
Not Used	0560	MEA	Measurements	C	10
Must Use	0570	QTY	Quantity (52) - Per Pack	C	1
Not Used	0580	DTM	Date/Time/Period	C	5
Not Used	0590		Segment Group 15: PCI-GIN	C	10
Not Used	0600	PCI	Package Identification	M	1
Not Used	0610	GIN	Goods Identity Number	C	10
Not Used	0620		Segment Group 16: QVR-DTM-SG17	C	10
Not Used	0630	QVR	Quantity Variances	M	1
Not Used	0640	DTM	Date/Time/Period	C	5
Not Used	0650		Segment Group 17: RFF-DTM	C	10
Not Used	0660	RFF	Reference	M	1

Not Used	0670	DTM	Date/Time/Period	C	1	
Not Used	0680		Segment Group 18: LIN-PIA-IMD-MEA-ALI-GIN-GIR-DTM-FTX-SG19-SG20-SG22-SG24	C		9999
Not Used	0690	LIN	Line Item	M	1	
Not Used	0700	PIA	Additional Product Id	C	10	
Not Used	0710	IMD	Item Description	C	10	
Not Used	0720	MEA	Measurements	C	5	
Not Used	0730	ALI	Additional Information	C	5	
Not Used	0740	GIN	Goods Identity Number	C	100	
Not Used	0750	GIR	Related Identification Numbers	C	100	
Not Used	0760	DTM	Date/Time/Period	C	5	
Not Used	0770	FTX	Free Text	C	5	
Not Used	0780		Segment Group 19: RFF-DTM	C		10
Not Used	0790	RFF	Reference	M	1	
Not Used	0800	DTM	Date/Time/Period	C	1	
Not Used	0810		Segment Group 20: QTY-SCC-DTM-SG21	C		50
Not Used	0820	QTY	Quantity	M	1	
Not Used	0830	SCC	Scheduling Conditions	C	1	
Not Used	0840	DTM	Date/Time/Period	C	2	
Not Used	0850		Segment Group 21: RFF-DTM	C		10
Not Used	0860	RFF	Reference	M	1	
Not Used	0870	DTM	Date/Time/Period	C	1	
Not Used	0880		Segment Group 22: PAC-MEA-QTY-DTM-SG23	C		10
Not Used	0890	PAC	Package	M	1	
Not Used	0900	MEA	Measurements	C	10	
Not Used	0910	QTY	Quantity	C	5	
Not Used	0920	DTM	Date/Time/Period	C	5	
Not Used	0930		Segment Group 23: PCI-GIN	C		10
Not Used	0940	PCI	Package Identification	M	1	
Not Used	0950	GIN	Goods Identity Number	C	10	
Not Used	0960		Segment Group 24: NAD-LOC-FTX-SG25-SG26-SG27-SG29-SG31	C		500
Not Used	0970	NAD	Name and Address	M	1	
Not Used	0980	LOC	Place/Location Identification	C	10	
Not Used	0990	FTX	Free Text	C	5	
Not Used	1000		Segment Group 25: DOC-DTM	C		10
Not Used	1010	DOC	Document/Message Details	M	1	
Not Used	1020	DTM	Date/Time/Period	C	1	
Not Used	1030		Segment Group 26: CTA-COM	C		5
Not Used	1040	CTA	Contact Information	M	1	
Not Used	1050	COM	Communication Contact	C	5	
Not Used	1060		Segment Group 27: QTY-SCC-DTM-SG28	C		50
Not Used	1070	QTY	Quantity	M	1	
Not Used	1080	SCC	Scheduling Conditions	C	1	
Not Used	1090	DTM	Date/Time/Period	C	2	

Not Used	1100		Segment Group 28: RFF-DTM	C		10	
Not Used	1110	RFF	Reference	M	1		
Not Used	1120	DTM	Date/Time/Period	C	1		
Not Used	1130		Segment Group 29: QVR-DTM-SG30	C		10	
Not Used	1140	QVR	Quantity Variances	M	1		
Not Used	1150	DTM	Date/Time/Period	C	5		
Not Used	1160		Segment Group 30: RFF-DTM	C		10	
Not Used	1170	RFF	Reference	M	1		
Not Used	1180	DTM	Date/Time/Period	C	1		
Not Used	1190		Segment Group 31: TDT-DTM	C		10	
Not Used	1200	TDT	Details of Transport	M	1		
Not Used	1210	DTM	Date/Time/Period	C	5		

Section Control:

<u>Adient Attributes</u>	<u>Pos. No.</u>	<u>Seg. ID</u>	<u>Name</u>	<u>Base Attributes</u>	<u>Max.Use</u>	<u>Group Repeat</u>	<u>Notes and Comments</u>
M	1220	UNS	Section Control	M	1		

Summary Section:

<u>Adient Attributes</u>	<u>Pos. No.</u>	<u>Seg. ID</u>	<u>Name</u>	<u>Base Attributes</u>	<u>Max.Use</u>	<u>Group Repeat</u>	<u>Notes and Comments</u>
Not Used	1230	CNT	Control Total	C	5		
Not Used	1240	FTX	Free Text	C	5		
M	1250	UNT	Message Trailer	M	1		

Segment: UNH Message Header
Position: 0010
Group:
Level: 0
Usage: Mandatory
Max Use: 1
Purpose: A service segment starting and uniquely identifying a message. The message type code for the Delivery schedule message is DELFOR.

Note: Delivery schedule messages conforming to this document must contain the following data in segment UNH, composite S009:

Data element 0065 DELFOR 0052 D 0054 96A 0051 UN

Dependency Notes:

Semantic Notes:

Comments:

Business Rules:

Notes:

Variable Name: UNH1

Notes to Trading Partner

This segment is used to begin the DELFOR message.

Composite S009, data elements 0065, 0052, 0054, and 0051 indicate that the message is a UNSM Delivery Schedule message based on the D.96A directory under the control of the United Nations.

Data Examples

UNH+56200001+DELFOR:D:96A:UN'

Data Element Summary

User	Data	Component		
<u>Attribute</u>	<u>Element</u>	<u>Element</u>	<u>Name</u>	<u>Attributes</u>
M	0062		MESSAGE REFERENCE NUMBER	M an..14
			Unique message reference assigned by the sender.	
M	S009		MESSAGE IDENTIFIER	M
			Identification of the type, version etc. of the message being interchanged.	
M		0065	Message type identifier	M an..6
			Code identifying a type of message and assigned by its controlling agency.	
			DELFOR Delivery schedule message	
			Message from buyer to supplier giving product requirements regarding details for short term delivery instructions and/or medium to long term product/service forecast for planning purposes according to conditions set out in a contract or order. The message can be used to authorize the commitment of labour and materials resources.	
M		0052	Message type version number	M an..3
			Version number of a message type.	
			D Draft version/UN/EDIFACT Directory	
M		0054	Message type release number	M an..3
			Release number within the current message type version number (0052).	
			96A Version 96A	
M		0051	Controlling agency	M an..2
			Code identifying the agency controlling the specification, maintenance and publication of the message type.	

		UN	UN/ECE/TRADE/WP.4, United Nations Standard Messages (UNSM) UN Economic Commission for Europe (UN/ECE), Committee on the development of trade (TRADE), Working Party on facilitation of international trade procedures (WP.4).	
	0057	Association assigned code		C an..6
			Code, assigned by the association responsible for the design and maintenance of the message type concerned, which further identifies the message.	
	0068	COMMON ACCESS REFERENCE		C an..35
			Reference serving as a key to relate all subsequent transfers of data to the same business case or file.	
	S010	STATUS OF THE TRANSFER		C
			Statement that the message is one in a sequence of transfers relating to the same topic.	
M	0070	Sequence message transfer number		M n..2
			Number assigned by the sender indicating that the message is an addition or change of a previously sent message relating to the same topic.	
	0073	First/last sequence message transfer indication		C a1
			Indication used for the first and last message in a sequence of the same type of message relating to the same topic. Refer to D.96A Data Element Dictionary for acceptable code values.	

Segment: **BGM** Beginning of Message
Position: 0020
Group:
Level: 0
Usage: Mandatory
Max Use: 1
Purpose: A segment for the unique identification of the delivery schedule document, by means of its name and its number.

Dependency Notes:

Semantic Notes:

Comments:

Notes:

Notes to Trading Partner

All references other than the Document/Message Number in data element 1004 will be in an RFF segment.

Data element 1004: It is recommended that the length of the Document/Message Number be restricted to a maximum of 17 characters.

Data Examples

BGM+241+37+9'

Data Element Summary

User	Data	Component			Attributes
<u>Attribute</u>	<u>Element</u>	<u>Element</u>	<u>Name</u>		
Must Use	C002		DOCUMENT/MESSAGE NAME		C
			Identification of a type of document/message by code or name. Code preferred.		
Must Use		1001	Document/message name, coded		C an..3
			Document/message identifier expressed in code.		
			241 Delivery schedule		
			Usage of DELFOR-message.		
Not Used		1131	Code list qualifier		C an..3
			Identification of a code list.		
			Refer to D.96A Data Element Dictionary for acceptable code values.		
Not Used		3055	Code list responsible agency, coded		C an..3
			Code identifying the agency responsible for a code list.		
			Refer to D.96A Data Element Dictionary for acceptable code values.		
Not Used		1000	Document/message name		C an..35
			Plain language identifier specifying the function of a document/message.		
Must Use	1004		DOCUMENT/MESSAGE NUMBER		C an..35
			Reference number assigned to the document/message by the issuer.		
			Notes to Trading Partner:		
			Delivery Schedule number assigned by the document sender.		
Must Use	1225		MESSAGE FUNCTION, CODED		C an..3
			Code indicating the function of the message.		
			9 Original		
			Initial transmission related to a given transaction.		
Not Used	4343		RESPONSE TYPE, CODED		C an..3
			Code specifying the type of acknowledgement required or transmitted.		
			Refer to D.96A Data Element Dictionary for acceptable code values.		

Segment: **DTM** **Date/Time/Period - Message Creation Date**
Position: 0030
Group:
Level: 0
Usage: Mandatory
Max Use: 1
Purpose: A segment specifying the date, and when relevant, the time/period of the beginning and ending of the validity period of the document. The DTM must be specified at least once to identify the Delivery Schedule document date.
 The date/time/period segment within other Segment group should be used whenever the date/time/period is logically related to another specified data item.

Dependency Notes:

Semantic Notes:

Comments:

Notes: **Notes to Trading Partner**

This segment is used to specify the message creation date.

Data Examples

DTM+137:20140607:102'

Data Element Summary

<u>User</u>	<u>Data</u>	<u>Component</u>	<u>Name</u>	<u>Attributes</u>
<u>Attribute</u>	<u>Element</u>	<u>Element</u>		
M	C507		DATE/TIME/PERIOD	M
			Date and/or time, or period relevant to the specified date/time/period type.	
M		2005	Date/time/period qualifier	M an..3
			Code giving specific meaning to a date, time or period.	
			137 Document/message date/time	
			(2006) Date/time when a document/message is issued.	
			This may include authentication.	
Must Use		2380	Date/time/period	C an..35
			The value of a date, a date and time, a time or of a period in a specified representation.	
Must Use		2379	Date/time/period format qualifier	C an..3
			Specification of the representation of a date, a date and time or of a period.	
			102 CCYYMMDD	
			Calendar date: C = Century ; Y = Year ; M = Month ; D = Day.	

Segment: **DTM** **Date/Time/Period - Horizon Start Date**
Position: 0030
Group:
Level: 0
Usage: Optional (Optional)
Max Use: 1
Purpose: A segment specifying the date, and when relevant, the time/period of the beginning and ending of the validity period of the document. The DTM must be specified at least once to identify the Delivery Schedule document date.
 The date/time/period segment within other Segment group should be used whenever the date/time/period is logically related to another specified data item.

Dependency Notes:
Semantic Notes:
Comments:

Notes: **Notes to Trading Partner**

This segment is used to provide the start date of the demand horizon period.

Data Examples

DTM+158:20140609:102'

Data Element Summary

<u>User</u>	<u>Data</u>	<u>Component</u>	<u>Name</u>	<u>Attributes</u>
<u>Attribute</u>	<u>Element</u>	<u>Element</u>		
M	C507		DATE/TIME/PERIOD	M
			Date and/or time, or period relevant to the specified date/time/period type.	
M		2005	Date/time/period qualifier	M an..3
			Code giving specific meaning to a date, time or period.	
			158 Horizon start date	
			The first date of a period forming a horizon.	
Must Use		2380	Date/time/period	C an..35
			The value of a date, a date and time, a time or of a period in a specified representation.	
Must Use		2379	Date/time/period format qualifier	C an..3
			Specification of the representation of a date, a date and time or of a period.	
			102 CCYYMMDD	
			Calendar date: C = Century ; Y = Year ; M = Month ; D = Day.	

Segment: **DTM** **Date/Time/Period - Horizon End Date**
Position: 0030
Group:
Level: 0
Usage: Optional (Optional)
Max Use: 1
Purpose: A segment specifying the date, and when relevant, the time/period of the beginning and ending of the validity period of the document. The DTM must be specified at least once to identify the Delivery Schedule document date.
 The date/time/period segment within other Segment group should be used whenever the date/time/period is logically related to another specified data item.

Dependency Notes:
Semantic Notes:
Comments:

Notes: **Notes to Trading Partner**

This segment is used to provide the end date of the demand horizon period.

Data Examples

DTM+159:20150930:102'

Data Element Summary

<u>User</u>	<u>Data</u>	<u>Component</u>	<u>Name</u>	<u>Attributes</u>
<u>Attribute</u>	<u>Element</u>	<u>Element</u>		
M	C507		DATE/TIME/PERIOD	M
			Date and/or time, or period relevant to the specified date/time/period type.	
M		2005	Date/time/period qualifier	M an..3
			Code giving specific meaning to a date, time or period.	
			159 Horizon end date	
			The last date of a period forming a horizon.	
Must Use		2380	Date/time/period	C an..35
			The value of a date, a date and time, a time or of a period in a specified representation.	
Must Use		2379	Date/time/period format qualifier	C an..3
			Specification of the representation of a date, a date and time or of a period.	
			102 CCYYMMDD	
			Calendar date: C = Century ; Y = Year ; M = Month ; D = Day.	

Group: **RFF** Segment Group 1: Reference
Position: 0040
Group:
Level: 1
Usage: Conditional (Optional)
Max Use: 10
Purpose: A group of segments giving references relevant to the whole message, e.g. contract number.

Segment Summary

<u>User</u>	<u>Pos.</u>	<u>Seg.</u>			<u>Req.</u>	<u>Max.</u>	<u>Group:</u>
<u>Attribute</u>	<u>No.</u>	<u>ID</u>	<u>Name</u>		<u>Des.</u>	<u>Use</u>	<u>Repeat</u>
M	0050	RFF	Reference		M	1	

Segment: **RFF Reference**
Position: 0050 (Trigger Segment)
Group: Segment Group 1 (Reference) Conditional (Optional)
Level: 1
Usage: Mandatory
Max Use: 1
Purpose: A segment for referencing documents relating to the whole Delivery Schedule Message, e.g. contract, import/export license.

Dependency Notes:

Semantic Notes:

Comments:

Notes: **Notes to Trading Partner**

This segment is used to provide references that apply to the whole message, e.g., purchase order number, delivery instructions, import/export license.

Data Examples

RFF+ADE:0000369145'

Data Element Summary

<u>User</u>	<u>Data</u>	<u>Component</u>	<u>Name</u>	<u>Attributes</u>
<u>Attribute</u>	<u>Element</u>	<u>Element</u>		
M	C506		REFERENCE	M
			Identification of a reference.	
M		1153	Reference qualifier	M an..3
			Code giving specific meaning to a reference segment or a reference number.	
			ADE Account number	
			Identification number of an account.	
Must Use		1154	Reference number	C an..35
			Identification number the nature and function of which can be qualified by an entry in data element 1153 Reference qualifier.	
Not Used		1156	Line number	C an..6
			Number of the line in the document/message referenced in 1154 Reference number.	
Not Used		4000	Reference version number	C an..35
			To uniquely identify a reference by its revision number.	

Group: **NAD** Segment Group 2: Name and Address
Position: 0070
Group:
Level: 1
Usage: Conditional (Required)
Max Use: 1
Purpose: A group of segments identifying names, addresses, locations, and contacts relevant to the whole Delivery Schedule.

Segment Summary

<u>User</u>	<u>Pos.</u>	<u>Seg.</u>	<u>Name</u>	<u>Req.</u>	<u>Max.</u>	<u>Group:</u>
<u>Attribute</u>	<u>No.</u>	<u>ID</u>		<u>Des.</u>	<u>Use</u>	<u>Repeat</u>
M	0080	NAD	Name and Address - Seller (Supplier)	M	1	

Segment: **NAD Name and Address - Seller (Supplier)**
Position: 0080 (Trigger Segment)
Group: Segment Group 2 (Name and Address) Conditional (Required)
Level: 1
Usage: Mandatory
Max Use: 1
Purpose: A segment for identifying names and addresses and their functions relevant for the whole Delivery Schedule. Identification of the seller and buyer parties is recommended for the Delivery Schedule message. Exception: the identification of the recipient of the goods must be given in the NAD segment in the detail section when required.
 It is recommended that where possible only the coded form of the party ID should be specified, e.g. the buyer and seller are known to each other, thus only the coded ID is required. The consignee or delivery address may vary and would have to be clearly specified, preferably in structured format.

Dependency Notes:

Semantic Notes:

Comments:

Notes: **Notes to Trading Partner**

This segment is used to identify the seller (supplier) involved in the Delivery Schedule message. Identification of the seller is mandatory in the Delivery Schedule.

Data Examples

NAE+SE+369145::92++SELLER NAME'

Data Element Summary

<u>User</u>	<u>Data</u>	<u>Component</u>	<u>Attributes</u>
<u>Attribute</u>	<u>Element</u>	<u>Element</u> <u>Name</u>	
M	3035	PARTY QUALIFIER Code giving specific meaning to a party. SE Seller (3346) Party selling merchandise to a buyer.	M an..3
Must Use	C082	PARTY IDENTIFICATION DETAILS Identification of a transaction party by code.	C
M	3039	Party id. identification Code identifying a party involved in a transaction.	M an..35
		Notes to Trading Partner: Adiant-assigned supplier code	
Not Used	1131	Code list qualifier Identification of a code list. Refer to D.96A Data Element Dictionary for acceptable code values.	C an..3
Must Use	3055	Code list responsible agency, coded Code identifying the agency responsible for a code list. 92 Assigned by buyer or buyer's agent	C an..3
Not Used	C058	NAME AND ADDRESS Unstructured name and address: one to five lines.	C
Not Used	3124	Name and address line Free form name and address description.	M an..35
Not Used	3124	Name and address line Free form name and address description.	C an..35
Not Used	3124	Name and address line Free form name and address description.	C an..35

Not Used		3124	Name and address line Free form name and address description.	C	an..35
Not Used		3124	Name and address line Free form name and address description.	C	an..35
	C080		PARTY NAME Identification of a transaction party by name, one to five lines. Party name may be formatted.	C	
M		3036	Party name Name of a party involved in a transaction.	M	an..35
		3036	Party name Name of a party involved in a transaction.	C	an..35
Not Used		3036	Party name Name of a party involved in a transaction.	C	an..35
Not Used		3036	Party name Name of a party involved in a transaction.	C	an..35
Not Used		3036	Party name Name of a party involved in a transaction.	C	an..35
Not Used		3045	Party name format, coded Specification of the representation of a party name. Refer to D.96A Data Element Dictionary for acceptable code values.	C	an..3
Not Used	C059		STREET Street address and/or PO Box number in a structured address: one to three lines.	C	
Not Used		3042	Street and number/p.o. box Street and number in plain language, or Post Office Box No.	M	an..35
Not Used		3042	Street and number/p.o. box Street and number in plain language, or Post Office Box No.	C	an..35
Not Used		3042	Street and number/p.o. box Street and number in plain language, or Post Office Box No.	C	an..35
Not Used		3042	Street and number/p.o. box Street and number in plain language, or Post Office Box No.	C	an..35
Not Used		3164	CITY NAME Name of a city (a town, a village) for addressing purposes.	C	an..35
Not Used		3229	COUNTRY SUB-ENTITY IDENTIFICATION Identification of the name of sub-entities (state, province) defined by appropriate governmental agencies.	C	an..9
Not Used		3251	POSTCODE IDENTIFICATION Code defining postal zones or addresses.	C	an..9
Not Used		3207	COUNTRY, CODED Identification of the name of a country or other geographical entity as specified in ISO 3166.	C	an..3

Group: **NAD** Segment Group 2: Name and Address
Position: 0070
Group:
Level: 1
Usage: Conditional (Required)
Max Use: 1
Purpose:

Segment Summary

<u>User</u>	<u>Pos.</u>	<u>Seg.</u>	<u>Name</u>	<u>Req.</u>	<u>Max.</u>	<u>Group:</u>
<u>Attribute</u>	<u>No.</u>	<u>ID</u>		<u>Des.</u>	<u>Use</u>	<u>Repeat</u>
M	0080	NAD	Name and Address - Buyer (Adient Plant)	M	1	

Segment: **NAD** Name and Address - Buyer (Adient Plant)
Position: 0080 (Trigger Segment)
Group: Segment Group 2 (Name and Address) Conditional (Required)
Level: 1
Usage: Mandatory
Max Use: 1
Purpose: A segment for identifying names and addresses and their functions relevant for the whole Delivery Schedule. Identification of the seller and buyer parties is recommended for the Delivery Schedule message. Exception: the identification of the recipient of the goods must be given in the NAD segment in the detail section when required.
 It is recommended that where possible only the coded form of the party ID should be specified, e.g. the buyer and seller are known to each other, thus only the coded ID is required. The consignee or delivery address may vary and would have to be clearly specified, preferably in structured format.

Dependency Notes:

Semantic Notes:

Comments:

Notes: Notes to Trading Partner

This segment is used to identify the buyer (Adient plant) involved in the Delivery Schedule message. Identification of the buyer is mandatory in the Delivery Schedule.

Data Examples

NAD+BY+1449::92++ADIENT PLANT NAME'

Data Element Summary

<u>User</u>	<u>Data</u>	<u>Component</u>	<u>Attributes</u>
<u>Attribute</u>	<u>Element</u>	<u>Element</u> <u>Name</u>	
M	3035	PARTY QUALIFIER Code giving specific meaning to a party. BY Buyer (3002) Party to which merchandise is sold.	M an..3
Must Use	C082	PARTY IDENTIFICATION DETAILS Identification of a transaction party by code.	C
M	3039	Party id. identification Code identifying a party involved in a transaction.	M an..35
		Notes to Trading Partner: Adient 4-digit site code - e.g. 0967	
Not Used		1131 Code list qualifier Identification of a code list. Refer to D.96A Data Element Dictionary for acceptable code values.	C an..3
		3055 Code list responsible agency, coded Code identifying the agency responsible for a code list. 92 Assigned by buyer or buyer's agent	C an..3
Not Used	C058	NAME AND ADDRESS Unstructured name and address: one to five lines.	C
Not Used		3124 Name and address line Free form name and address description.	M an..35
Not Used		3124 Name and address line Free form name and address description.	C an..35
Not Used		3124 Name and address line Free form name and address description.	C an..35

Not Used		3124	Name and address line Free form name and address description.	C	an..35
Not Used		3124	Name and address line Free form name and address description.	C	an..35
	C080		PARTY NAME Identification of a transaction party by name, one to five lines. Party name may be formatted.	C	
M		3036	Party name Name of a party involved in a transaction.	M	an..35
		3036	Party name Name of a party involved in a transaction.	C	an..35
Not Used		3036	Party name Name of a party involved in a transaction.	C	an..35
Not Used		3036	Party name Name of a party involved in a transaction.	C	an..35
Not Used		3036	Party name Name of a party involved in a transaction.	C	an..35
Not Used		3045	Party name format, coded Specification of the representation of a party name. Refer to D.96A Data Element Dictionary for acceptable code values.	C	an..3
Not Used	C059		STREET Street address and/or PO Box number in a structured address: one to three lines.	C	
Not Used		3042	Street and number/p.o. box Street and number in plain language, or Post Office Box No.	M	an..35
Not Used		3042	Street and number/p.o. box Street and number in plain language, or Post Office Box No.	C	an..35
Not Used		3042	Street and number/p.o. box Street and number in plain language, or Post Office Box No.	C	an..35
Not Used		3042	Street and number/p.o. box Street and number in plain language, or Post Office Box No.	C	an..35
Not Used		3164	CITY NAME Name of a city (a town, a village) for addressing purposes.	C	an..35
Not Used		3229	COUNTRY SUB-ENTITY IDENTIFICATION Identification of the name of sub-entities (state, province) defined by appropriate governmental agencies.	C	an..9
Not Used		3251	POSTCODE IDENTIFICATION Code defining postal zones or addresses.	C	an..9
Not Used		3207	COUNTRY, CODED Identification of the name of a country or other geographical entity as specified in ISO 3166.	C	an..3

Segment: **UNS Section Control**
Position: 0130
Group:
Level: 0
Usage: Mandatory
Max Use: 1
Purpose: A service segment placed at the start of the detail section to avoid segment collision. The detail section consists of two main Segment groups: Segment group 4 and Segment group 18. The use of one of the Segment groups assumes that the other group will not be used. There are two methods of conveying Product Delivery forecast information. First method is by delivery point (Segment groups 4-17), the second is product driven (Segment group 18-31).

Dependency Notes:

Semantic Notes:

Comments:

Notes: **Notes to Trading Partner**

This segment is used to separate the detail section from the header section.

Data Examples

UNS+D'

Data Element Summary

<u>User Attribute</u>	<u>Data Element</u>	<u>Component Element</u>	<u>Name</u>	<u>Attributes</u>
M	0081		SECTION IDENTIFIER	M a1
			A character identifying the next section in a message.	
		D	Header/detail section separation	
			To qualify the segment UNS, when separating the header from the detail section of a message.	

Group: **NAD** Segment Group 4: Name and Address
Position: 0140
Group:
Level: 1
Usage: Conditional (Required)
Max Use: 1
Purpose: A group containing delivery names and addresses, related information and details of line items to be consigned to the delivery points.

Segment Summary

<u>User</u>	<u>Pos.</u>	<u>Seg.</u>	<u>Name</u>	<u>Req.</u>	<u>Max.</u>	<u>Group:</u>
<u>Attribute</u>	<u>No.</u>	<u>ID</u>		<u>Des.</u>	<u>Use</u>	<u>Repeat</u>
M	0150	NAD	Name and Address - Consignee (Ship To)	M	1	
	0270		Segment Group 8: Line Item	C		9999

Segment: **NAD** Name and Address - Consignee (Ship To)
Position: 0150 (Trigger Segment)
Group: Segment Group 4 (Name and Address) Conditional (Required)
Level: 1
Usage: Mandatory
Max Use: 1
Purpose: A segment for identifying names and addresses and their functions relevant to the delivery point.
 All other segments in this segment group 4 following the NAD segment refer to that delivery point.

Dependency Notes:

Semantic Notes:

Comments:

Notes: **Notes to Trading Partner**

This segment is used to identify the consignee (Ship To) involved in the Delivery Schedule message. Identification of the ship-to is mandatory in the Delivery Schedule Message.

Data Examples

NAD+CN+1449::92++ADIANT SHIP-TO NAME'

Data Element Summary

<u>User</u>	<u>Data</u>	<u>Component</u>	<u>Name</u>	<u>Attributes</u>
<u>Attribute</u>	<u>Element</u>	<u>Element</u>		
M	3035		PARTY QUALIFIER Code giving specific meaning to a party. CN Consignee (3132) Party to which goods are consigned.	M an..3
Must Use	C082		PARTY IDENTIFICATION DETAILS Identification of a transaction party by code.	C
M		3039	Party id. identification Code identifying a party involved in a transaction.	M an..35
			Notes to Trading Partner: Adient 4-digit site code - e.g. 0967	
Not Used		1131	Code list qualifier Identification of a code list. Refer to D.96A Data Element Dictionary for acceptable code values.	C an..3
Must Use		3055	Code list responsible agency, coded Code identifying the agency responsible for a code list. 92 Assigned by buyer or buyer's agent	C an..3
Not Used	C058		NAME AND ADDRESS Unstructured name and address: one to five lines.	C
Not Used		3124	Name and address line Free form name and address description.	M an..35
Not Used		3124	Name and address line Free form name and address description.	C an..35
Not Used		3124	Name and address line Free form name and address description.	C an..35
Not Used		3124	Name and address line Free form name and address description.	C an..35

Not Used		3124	Name and address line Free form name and address description.	C	an..35
	C080		PARTY NAME Identification of a transaction party by name, one to five lines. Party name may be formatted.	C	
M		3036	Party name Name of a party involved in a transaction.	M	an..35
		3036	Party name Name of a party involved in a transaction.	C	an..35
Not Used		3036	Party name Name of a party involved in a transaction.	C	an..35
Not Used		3036	Party name Name of a party involved in a transaction.	C	an..35
Not Used		3036	Party name Name of a party involved in a transaction.	C	an..35
Not Used		3045	Party name format, coded Specification of the representation of a party name. Refer to D.96A Data Element Dictionary for acceptable code values.	C	an..3
Not Used	C059		STREET Street address and/or PO Box number in a structured address: one to three lines.	C	
Not Used		3042	Street and number/p.o. box Street and number in plain language, or Post Office Box No.	M	an..35
Not Used		3042	Street and number/p.o. box Street and number in plain language, or Post Office Box No.	C	an..35
Not Used		3042	Street and number/p.o. box Street and number in plain language, or Post Office Box No.	C	an..35
Not Used		3042	Street and number/p.o. box Street and number in plain language, or Post Office Box No.	C	an..35
Not Used	3164		CITY NAME Name of a city (a town, a village) for addressing purposes.	C	an..35
Not Used	3229		COUNTRY SUB-ENTITY IDENTIFICATION Identification of the name of sub-entities (state, province) defined by appropriate governmental agencies.	C	an..9
Not Used	3251		POSTCODE IDENTIFICATION Code defining postal zones or addresses.	C	an..9
Not Used	3207		COUNTRY, CODED Identification of the name of a country or other geographical entity as specified in ISO 3166.	C	an..3

Group: **LIN** Segment Group 8: Line Item
Position: 0270
Group: Segment Group 4 (Name and Address) Conditional (Required)
Level: 2
Usage: Conditional (Required)
Max Use: 9999
Purpose: A group of segments providing details of the individual line items for the specified delivery point.

Segment Summary						
User	Pos.	Seg.		Req.	Max.	Group:
<u>Attribute</u>	<u>No.</u>	<u>ID</u>	<u>Name</u>	<u>Des.</u>	<u>Use</u>	<u>Repeat</u>
M	0280	LIN	Line Item	M	1	
	0290	PIA	Additional Product Id	C	1	
	0300	IMD	Item Description	C	1	
	0350	LOC	Place/Location Identification - Adient Dock Code	C	1	
	0350	LOC	Place/Location Identification - Other Internal Adient Location	C	1	
	0360	DTM	Date/Time/Period - Calculation Date	C	1	
	0360	DTM	Date/Time/Period - Finished Goods Go-Ahead End Date	C	1	
	0360	DTM	Date/Time/Period - Raw Materials Go-Ahead End Date	C	1	
	0410		Segment Group 10: Reference	C		1
	0470		Segment Group 12: Quantity	C		3
	0470		Segment Group 12: Quantity	C		1
	0470		Segment Group 12: Quantity	C		1
	0470		Segment Group 12: Quantity	C		1
	0470		Segment Group 12: Quantity	C		1
	0470		Segment Group 12: Quantity	C		200
	0540		Segment Group 14: Package	C		50

Segment: **LIN** Line Item
Position: 0280 (Trigger Segment)
Group: Segment Group 8 (Line Item) Conditional (Required)
Level: 2
Usage: Mandatory
Max Use: 1
Purpose: A segment identifying the details of the product or service to be delivered, e.g. product identification. All other segments in the detail section following the LIN segment refer to the line item.

Dependency Notes:

Semantic Notes:

Comments:

Notes: **Notes to Trading Partner**

This segment is used to provide the Adient item number.

Data Examples

LIN+++317923.61:IN'

Data Element Summary

<u>User</u>	<u>Data</u>	<u>Component</u>	<u>Name</u>	<u>Attributes</u>
<u>Attribute</u>	<u>Element</u>	<u>Element</u>		
Not Used	1082		LINE ITEM NUMBER Serial number designating each separate item within a series of articles.	C n..6
Not Used	1229		ACTION REQUEST/NOTIFICATION, CODED Code specifying the action to be taken or already taken. Refer to D.96A Data Element Dictionary for acceptable code values.	C an..3
Must Use	C212		ITEM NUMBER IDENTIFICATION Goods identification for a specified source.	C
Must Use		7140	Item number A number allocated to a group or item.	C an..35
Must Use		7143	Item number type, coded Identification of the type of item number. IN Buyer's item number	C an..3
Not Used		1131	Code list qualifier Identification of a code list. Refer to D.96A Data Element Dictionary for acceptable code values.	C an..3
Not Used		3055	Code list responsible agency, coded Code identifying the agency responsible for a code list. Refer to D.96A Data Element Dictionary for acceptable code values.	C an..3
Not Used	C829		SUB-LINE INFORMATION To provide an indication that a segment or segment group is used to contain sub-line or sub-line item information and to optionally enable the sub-line to be identified.	C

Not Used	5495	Sub-line indicator, coded	C an..3
		Indication that the segment and/or segment group is used for sub-line item information. Refer to D.96A Data Element Dictionary for acceptable code values.	
Not Used	1082	Line item number	C n..6
		Serial number designating each separate item within a series of articles.	
Not Used	1222	CONFIGURATION LEVEL	C n..2
		Number indicating the level of an object which is in a hierarchy.	
Not Used	7083	CONFIGURATION, CODED	C an..3
		Code indicating the status of the sub-line item in the configuration. Refer to D.96A Data Element Dictionary for acceptable code values.	

Segment: **PIA Additional Product Id**
Position: 0290
Group: Segment Group 8 (Line Item) Conditional (Required)
Level: 3
Usage: Conditional (Optional)
Max Use: 1
Purpose: A segment providing additional product identification.
Dependency Notes:
Semantic Notes:
Comments:
Notes:

Notes to Trading Partner

This segment is used to provide the supplier's item number and/or the engineering change level.

Data Examples

PIA+1+CR153:SA+001:EC'
 PIA+1+001:EC'
 PIA+1+CR153:SA'
 PIA+1+001:EC+CR153:SA'

Data Element Summary

<u>User</u>	<u>Data</u>	<u>Component</u>	<u>Name</u>	<u>Attributes</u>
<u>Attribute</u>	<u>Element</u>	<u>Element</u>		
M	4347		PRODUCT ID. FUNCTION QUALIFIER Indication of the function of the product code. 1 Additional identification Information which specifies and qualifies product identifications.	M an..3
M	C212		ITEM NUMBER IDENTIFICATION Goods identification for a specified source.	M
Must Use		7140	Item number A number allocated to a group or item.	C an..35
Must Use		7143	Item number type, coded Identification of the type of item number. Notes to Trading Partner: Supplier's item number or Engineering Change Level	C an..3
			Notes to Trading Partner: If C212_7140 contains the supplier's item number, then this field will contain "SA". If C212_7140 contains the Engineering Change Level, then this field will contain "EC".	
			EC Engineering change level Reference number indicating that a change or revision has been applied to an article's specification.	
			SA Supplier's article number Number assigned to an article by the supplier of that article.	

Not Used		1131	Code list qualifier Identification of a code list. Refer to D.96A Data Element Dictionary for acceptable code values.	C	an..3
Not Used		3055	Code list responsible agency, coded Code identifying the agency responsible for a code list. Refer to D.96A Data Element Dictionary for acceptable code values.	C	an..3
	C212		ITEM NUMBER IDENTIFICATION Goods identification for a specified source.	C	
Must Use		7140	Item number A number allocated to a group or item. Notes to Trading Partner: Supplier's item number or Engineering Change Level	C	an..35
Must Use		7143	Item number type, coded Identification of the type of item number. Notes to Trading Partner: If C212_7140 contains the supplier's item number, then this field will contain "SA". If C212_7140 contains the Engineering Change Level, then this field will contain "EC". Refer to D.96A Data Element Dictionary for acceptable code values.	C	an..3
Not Used		1131	Code list qualifier Identification of a code list. Refer to D.96A Data Element Dictionary for acceptable code values.	C	an..3
Not Used		3055	Code list responsible agency, coded Code identifying the agency responsible for a code list. Refer to D.96A Data Element Dictionary for acceptable code values.	C	an..3
Not Used	C212		ITEM NUMBER IDENTIFICATION Goods identification for a specified source.	C	
Not Used		7140	Item number A number allocated to a group or item.	C	an..35
Not Used		7143	Item number type, coded Identification of the type of item number. Refer to D.96A Data Element Dictionary for acceptable code values.	C	an..3
Not Used		1131	Code list qualifier Identification of a code list. Refer to D.96A Data Element Dictionary for acceptable code values.	C	an..3
Not Used		3055	Code list responsible agency, coded Code identifying the agency responsible for a code list. Refer to D.96A Data Element Dictionary for acceptable code values.	C	an..3
Not Used	C212		ITEM NUMBER IDENTIFICATION Goods identification for a specified source.	C	
Not Used		7140	Item number A number allocated to a group or item.	C	an..35
Not Used		7143	Item number type, coded Identification of the type of item number. Refer to D.96A Data Element Dictionary for acceptable code values.	C	an..3
Not Used		1131	Code list qualifier Identification of a code list. Refer to D.96A Data Element Dictionary for acceptable code values.	C	an..3

			Identification of a code list. Refer to D.96A Data Element Dictionary for acceptable code values.		
Not Used		3055	Code list responsible agency, coded	C	an..3
			Code identifying the agency responsible for a code list. Refer to D.96A Data Element Dictionary for acceptable code values.		
Not Used	C212		ITEM NUMBER IDENTIFICATION	C	
			Goods identification for a specified source.		
Not Used		7140	Item number	C	an..35
			A number allocated to a group or item.		
Not Used		7143	Item number type, coded	C	an..3
			Identification of the type of item number. Refer to D.96A Data Element Dictionary for acceptable code values.		
Not Used		1131	Code list qualifier	C	an..3
			Identification of a code list. Refer to D.96A Data Element Dictionary for acceptable code values.		
Not Used		3055	Code list responsible agency, coded	C	an..3
			Code identifying the agency responsible for a code list. Refer to D.96A Data Element Dictionary for acceptable code values.		

Segment: **IMD** Item Description
Position: 0300
Group: Segment Group 8 (Line Item) Conditional (Required)
Level: 3
Usage: Conditional (Optional)
Max Use: 1
Purpose: A segment for describing the product or the service to be delivered. This segment should be used for products that cannot be identified by a product code or article number.

Dependency Notes:

Semantic Notes:

Comments:

Notes:

Notes to Trading Partner

This segment is used to provide the Adient item description.

Data Examples

IMD+++:::FEDER OMEGA'

Data Element Summary

<u>User</u>	<u>Data</u>	<u>Component</u>	<u>Name</u>	<u>Attributes</u>
<u>Attribute</u>	<u>Element</u>	<u>Element</u>		
Not Used	7077		ITEM DESCRIPTION TYPE, CODED Code indicating the format of a description. Refer to D.96A Data Element Dictionary for acceptable code values.	C an..3
Not Used	7081		ITEM CHARACTERISTIC, CODED Code specifying the item characteristic being described. Refer to D.96A Data Element Dictionary for acceptable code values.	C an..3
Must Use	C273		ITEM DESCRIPTION Description of an item.	C
Not Used		7009	Item description identification Code from an industry code list which provides specific data about a product characteristic.	C an..17
Not Used		1131	Code list qualifier Identification of a code list. Refer to D.96A Data Element Dictionary for acceptable code values.	C an..3
Not Used		3055	Code list responsible agency, coded Code identifying the agency responsible for a code list. Refer to D.96A Data Element Dictionary for acceptable code values.	C an..3
Must Use		7008	Item description Plain language description of articles or products. Notes to Trading Partner: Adient Item Description	C an..35
		7008	Item description Plain language description of articles or products.	C an..35
Not Used		3453	Language, coded Code of language (ISO 639-1988).	C an..3
Not Used	7383		SURFACE/LAYER INDICATOR, CODED Code indicating the surface or layer of a product that is being described. Refer to D.96A Data Element Dictionary for acceptable code values.	C an..3

Segment: **LOC** Place/Location Identification - Adient Dock Code
Position: 0350
Group: Segment Group 8 (Line Item) Conditional (Required)
Level: 3
Usage: Conditional (Optional)
Max Use: 1
Purpose: A segment identifying a specific location to which products, as specified in the LIN-Segment group, should be delivered.

Dependency Notes:

Semantic Notes:

Comments:

Notes:

Notes to Trading Partner

This segment is used to provide the Adient dock code information, if the supplier is required to ship the item to a specific Adient dock code. This dock code must be returned on the Despatch Advice.

Data Examples

LOC+11+RH1::92'

Data Element Summary

<u>User</u>	<u>Data</u>	<u>Component</u>	<u>Name</u>	<u>Attributes</u>
<u>Attribute</u>	<u>Element</u>	<u>Element</u>		
M	3227		PLACE/LOCATION QUALIFIER - ADIENT DOCK CODE Code identifying the function of a location.	M an..3
		11	Place/port of discharge (3392 + 3414) Seaport, airport, freight terminal, rail station or other place at which the goods (cargo) are unloaded from the means of transport having been used for their carriage.	
Must Use	C517		LOCATION IDENTIFICATION Identification of a location by code or name.	C
Must Use		3225	Place/location identification Identification of the name of place/location, other than 3164 City name.	C an..25
			Notes to Trading Partner: Adient receiving dock	
Not Used		1131	Code list qualifier Identification of a code list. Refer to D.96A Data Element Dictionary for acceptable code values.	C an..3
Must Use		3055	Code list responsible agency, coded Code identifying the agency responsible for a code list.	C an..3
		92	Assigned by buyer or buyer's agent	
Not Used		3224	Place/location Name of place/location, other than 3164 City name.	C an..70
Not Used	C519		RELATED LOCATION ONE IDENTIFICATION Identification the first related location by code or name.	C

Not Used		3223	Related place/location one identification Specification of the first related place/location by code.	C	an..25
Not Used		1131	Code list qualifier Identification of a code list. Refer to D.96A Data Element Dictionary for acceptable code values.	C	an..3
Not Used		3055	Code list responsible agency, coded Code identifying the agency responsible for a code list. Refer to D.96A Data Element Dictionary for acceptable code values.	C	an..3
Not Used		3222	Related place/location one Specification of the first related place/location by name.	C	an..70
Not Used	C553		RELATED LOCATION TWO IDENTIFICATION Identification of second related location by code or name.	C	
Not Used		3233	Related place/location two identification Specification of a second related place/location by code.	C	an..25
Not Used		1131	Code list qualifier Identification of a code list. Refer to D.96A Data Element Dictionary for acceptable code values.	C	an..3
Not Used		3055	Code list responsible agency, coded Code identifying the agency responsible for a code list. Refer to D.96A Data Element Dictionary for acceptable code values.	C	an..3
Not Used		3232	Related place/location two Specification of a second related place/location by name.	C	an..70
Not Used	5479		RELATION, CODED To specify the relationship between two or more items.	C	an..3

Segment: **LOC** Place/Location Identification - Other Internal Adient Location
Position: 0350
Group: Segment Group 8 (Line Item) Conditional (Required)
Level: 3
Usage: Conditional (Optional)
Max Use: 1
Purpose: A segment identifying a specific location to which products, as specified in the LIN-Segment group, should be delivered.

Dependency Notes:
Semantic Notes:
Comments:
Notes:

Notes to Trading Partner

This segment is used to provide the Adient internal delivery location, if the supplier is required to ship the item to a specific Adient internal location. This Adient internal location must be returned on the Dispatch Advice.

Data Examples

LOC+159+HW10::92'

Data Element Summary

<u>User</u>	<u>Data</u>	<u>Component</u>	<u>Name</u>	<u>Attributes</u>
<u>Attribute</u>	<u>Element</u>	<u>Element</u>		
M	3227		PLACE/LOCATION QUALIFIER - OTHER ADIENT INTERNAL LOCATION Code identifying the function of a location. 159 Additional internal destination Any location within the consignee's premises where the goods are moved to.	M an..3
Must Use	C517		LOCATION IDENTIFICATION Identification of a location by code or name.	C
Must Use		3225	Place/location identification Identification of the name of place/location, other than 3164 City name.	C an..25
			Notes to Trading Partner: Internal Adient location for delivery, other than the dock code	
Not Used		1131	Code list qualifier Identification of a code list. Refer to D.96A Data Element Dictionary for acceptable code values.	C an..3
Must Use		3055	Code list responsible agency, coded Code identifying the agency responsible for a code list. 92 Assigned by buyer or buyer's agent	C an..3
Not Used		3224	Place/location Name of place/location, other than 3164 City name.	C an..70
Not Used	C519		RELATED LOCATION ONE IDENTIFICATION Identification the first related location by code or name.	C
Not Used		3223	Related place/location one identification Specification of the first related place/location by code.	C an..25

Not Used		1131 Code list qualifier	C an..3
		Identification of a code list. Refer to D.96A Data Element Dictionary for acceptable code values.	
Not Used		3055 Code list responsible agency, coded	C an..3
		Code identifying the agency responsible for a code list. Refer to D.96A Data Element Dictionary for acceptable code values.	
Not Used		3222 Related place/location one	C an..70
		Specification of the first related place/location by name.	
Not Used	C553	RELATED LOCATION TWO IDENTIFICATION	C
		Identification of second related location by code or name.	
Not Used		3233 Related place/location two identification	C an..25
		Specification of a second related place/location by code.	
Not Used		1131 Code list qualifier	C an..3
		Identification of a code list. Refer to D.96A Data Element Dictionary for acceptable code values.	
Not Used		3055 Code list responsible agency, coded	C an..3
		Code identifying the agency responsible for a code list. Refer to D.96A Data Element Dictionary for acceptable code values.	
Not Used		3232 Related place/location two	C an..70
		Specification of a second related place/location by name.	
Not Used	5479	RELATION, CODED	C an..3
		To specify the relationship between two or more items.	

Segment: **DTM** Date/Time/Period - Calculation Date
Position: 0360
Group: Segment Group 8 (Line Item) Conditional (Required)
Level: 3
Usage: Conditional (Optional)
Max Use: 1
Purpose: Date/time/period associated with the line item.
Dependency Notes:
Semantic Notes:
Comments:
Notes:

Notes to Trading Partner

This segment is used to provide the calculation date for the Finished Goods and Raw Material go-ahead end dates.

Data Examples

DTM+257:20140607:102'

Data Element Summary

<u>User Attribute</u>	<u>Data Element</u>	<u>Component Element</u>	<u>Name</u>	<u>Attributes</u>
M	C507		DATE/TIME/PERIOD	M
			Date and/or time, or period relevant to the specified date/time/period type.	
M		2005	Date/time/period qualifier	M an..3
			Code giving specific meaning to a date, time or period.	
		257	Calculation date	
Must Use		2380	Date/time/period	C an..35
			The value of a date, a date and time, a time or of a period in a specified representation.	
Must Use		2379	Date/time/period format qualifier	C an..3
			Specification of the representation of a date, a date and time or of a period.	
		102	CCYYMMDD	
			Calendar date: C = Century ; Y = Year ; M = Month ; D = Day.	

Segment: **DTM** Date/Time/Period - Finished Goods Go-Ahead End Date
Position: 0360
Group: Segment Group 8 (Line Item) Conditional (Required)
Level: 3
Usage: Conditional (Optional)
Max Use: 1
Purpose: Date/time/period associated with the line item.
Dependency Notes:
Semantic Notes:
Comments:
Notes: **Notes to Trading Partner**

This segment is used to provide the Finished Goods go-ahead end date.

Data Examples

DTM+153:20140707:102'

Data Element Summary

<u>User</u>	<u>Data</u>	<u>Component</u>	<u>Name</u>	<u>Attributes</u>
<u>Attribute</u>	<u>Element</u>	<u>Element</u>		
M	C507		DATE/TIME/PERIOD Date and/or time, or period relevant to the specified date/time/period type.	M
M		2005	Date/time/period qualifier Code giving specific meaning to a date, time or period. 153 Finished Goods Go-Ahead End Date The latest date/time on which cancellation of the payment order may be requested.	M an..3
Must Use		2380	Date/time/period The value of a date, a date and time, a time or of a period in a specified representation.	C an..35
Must Use		2379	Date/time/period format qualifier Specification of the representation of a date, a date and time or of a period. 102 CCYYMMDD Calendar date: C = Century ; Y = Year ; M = Month ; D = Day.	C an..3

Segment: **DTM** Date/Time/Period - Raw Materials Go-Ahead End Date
Position: 0360
Group: Segment Group 8 (Line Item) Conditional (Required)
Level: 3
Usage: Conditional (Optional)
Max Use: 1
Purpose: Date/time/period associated with the line item.
Dependency Notes:
Semantic Notes:
Comments:
Notes: **Notes to Trading Partner**

This segment is used to provide the Raw Materials go-ahead end date.

Data Examples

DTM+154:20140806:102'

Data Element Summary

<u>User</u>	<u>Data</u>	<u>Component</u>	<u>Name</u>	<u>Attributes</u>
M	C507		DATE/TIME/PERIOD Date and/or time, or period relevant to the specified date/time/period type.	M
M		2005	Date/time/period qualifier Code giving specific meaning to a date, time or period. 154 Raw Materials Go-Ahead End Date	M an..3
Must Use		2380	Date/time/period The value of a date, a date and time, a time or of a period in a specified representation.	C an..35
Must Use		2379	Date/time/period format qualifier Specification of the representation of a date, a date and time or of a period. 102 CCYYMMDD Calendar date: C = Century ; Y = Year ; M = Month ; D = Day.	C an..3

Group: **RFF** Segment Group 10: Reference
Position: 0410
Group: Segment Group 8 (Line Item) Conditional (Required)
Level: 3
Usage: Conditional (Required)
Max Use: 1
Purpose: A group of segments giving references related to the line item and where necessary, their dates.

Segment Summary

<u>User</u>	<u>Pos.</u>	<u>Seg.</u>	<u>Name</u>	<u>Req.</u>	<u>Max.</u>	<u>Group:</u>
<u>Attribute</u>	<u>No.</u>	<u>ID</u>		<u>Des.</u>	<u>Use</u>	<u>Repeat</u>
M	0420	RFF	Reference - Purchase Order Number	M	1	

Segment: **RFF Reference - Purchase Order Number**
Position: 0420 (Trigger Segment)
Group: Segment Group 10 (Reference) Conditional (Required)
Level: 3
Usage: Mandatory
Max Use: 1
Purpose: A segment for identifying documents relating to the line item, e.g. a contract and its appropriate line item.

Dependency Notes:

Semantic Notes:

Comments:

Notes: **Notes to Trading Partner**

This segment is used to provide the purchase order (PO) number and PO line number.

Data Examples

RFF+ON:0055056244:00001'

Data Element Summary

<u>User</u>	<u>Data</u>	<u>Component</u>	<u>Name</u>	<u>Attributes</u>
<u>Attribute</u>	<u>Element</u>	<u>Element</u>		
M	C506		REFERENCE Identification of a reference.	M
M		1153	Reference qualifier Code giving specific meaning to a reference segment or a reference number. ON Order number (purchase) [1022] Reference number assigned by the buyer to an order.	M an..3
Must Use		1154	Reference number Identification number the nature and function of which can be qualified by an entry in data element 1153 Reference qualifier. Notes to Trading Partner: Adient purchase order number - must be returned in the Despatch Advice	C an..35
Must Use		1156	Line number Number of the line in the document/message referenced in 1154 Reference number. Notes to Trading Partner: Adient purchase order line number - must be returned in the Despatch Advice	C an..6
Not Used		4000	Reference version number To uniquely identify a reference by its revision number.	C an..35

Group: **QTY** Segment Group 12: Quantity
Position: 0470
Group: Segment Group 8 (Line Item) Conditional (Required)
Level: 3
Usage: Conditional (Optional)
Max Use: 3
Purpose: A group of segments specifying quantity related information for actual delivery, reporting or cumulative quantities and forecast quantities as required for the line item.

Segment Summary

<u>User</u>	<u>Pos.</u>	<u>Seg.</u>	<u>Name</u>	<u>Req.</u>	<u>Max.</u>	<u>Group:</u>
<u>Attribute</u>	<u>No.</u>	<u>ID</u>		<u>Des.</u>	<u>Use</u>	<u>Repeat</u>
M	0480	QTY	Quantity (12) - Receipt Discrete Quantity	M	1	
	0510		Segment Group 13: Reference	C		1

Segment: **QTY** **Quantity (12) - Receipt Discrete Quantity**
Position: 0480 (Trigger Segment)
Group: Segment Group 12 (Quantity) Conditional (Optional)
Level: 3
Usage: Mandatory
Max Use: 1
Purpose: A segment to specify pertinent quantities which may be relating to schedule(s) and/or pattern established in the SCC/DTM segment, e.g. delivery quantity or a specified date.

Dependency Notes:

Semantic Notes:

Comments:

Notes:

Notes to Trading Partner

This segment is used to provide last discrete quantity received information. Adient will send up to 3 QTY(12) loops to report on the 3 most recent shipments received.

The value in data element 6411 must be the same unit of measure sent in the Despatch Advice.

Data Examples

QTY+12:36000:PCE'

Data Element Summary

<u>User</u>	<u>Data</u>	<u>Component</u>			<u>Attributes</u>
<u>Attribute</u>	<u>Element</u>	<u>Element</u>	<u>Name</u>		
M	C186		QUANTITY DETAILS		M
			Quantity information in a transaction, qualified when relevant .		
M		6063	Quantity qualifier		M an..3
			Code giving specific meaning to a quantity.		
			12	Despatch quantity	
				Quantity despatched by the seller.	
M		6060	Quantity		M n..15
			Numeric value of a quantity.		
Must Use		6411	Measure unit qualifier		C an..3
			Indication of the unit of measurement in which weight (mass), capacity, length, area, volume or other quantity is expressed.		

Group: **RFF** Segment Group 13: Reference
Position: 0510
Group: Segment Group 12 (Quantity) Conditional (Optional)
Level: 4
Usage: Conditional (Optional)
Max Use: 1
Purpose: A group of segments for referencing specific product delivery release information and where necessary their date.

Segment Summary

<u>User</u>	<u>Pos.</u>	<u>Seg.</u>		<u>Req.</u>	<u>Max.</u>	<u>Group:</u>
<u>Attribute</u>	<u>No.</u>	<u>ID</u>	<u>Name</u>	<u>Des.</u>	<u>Use</u>	<u>Repeat</u>
M	0520	RFF	Reference - Receipt Despatch Advice Number	M		1
Must Use	0530	DTM	Date/Time/Period - Receipt Date	C		1

Segment: **RFF** Reference - Receipt Despatch Advice Number
Position: 0520 (Trigger Segment)
Group: Segment Group 13 (Reference) Conditional (Optional)
Level: 4
Usage: Mandatory
Max Use: 1
Purpose: A segment for referencing specific product delivery release information e.g. appointment.

Dependency Notes:

Semantic Notes:

Comments:

Notes: **Notes to Trading Partner**

This segment is used to provide the Despatch Advice Number of the receipt.

Data Examples

RFF+AAK:4196347'

Data Element Summary

<u>User</u>	<u>Data</u>	<u>Component</u>	<u>Name</u>	<u>Attributes</u>
<u>Attribute</u>	<u>Element</u>	<u>Element</u>		
M	C506		REFERENCE Identification of a reference.	M
M		1153	Reference qualifier Code giving specific meaning to a reference segment or a reference number. AAK Despatch advice number Reference number assigned by issuing party to a despatch advice.	M an..3
Must Use		1154	Reference number Identification number the nature and function of which can be qualified by an entry in data element 1153 Reference qualifier. Notes to Trading Partner: Despatch Advice Number of receipt	C an..35
Not Used		1156	Line number Number of the line in the document/message referenced in 1154 Reference number.	C an..6
Not Used		4000	Reference version number To uniquely identify a reference by its revision number.	C an..35

Segment: **DTM** Date/Time/Period - Receipt Date
Position: 0530
Group: Segment Group 13 (Reference) Conditional (Optional)
Level: 5
Usage: Conditional (Required)
Max Use: 1
Purpose: Date/time of the referred document.

Dependency Notes:

Semantic Notes:

Comments:

Notes: **Notes to Trading Partner**

This segment is used to provide the date of the receipt.

Data Examples

DTM+171:20140605:102'

Data Element Summary

<u>User</u>	<u>Data</u>	<u>Component</u>	<u>Name</u>	<u>Attributes</u>
<u>Attribute</u>	<u>Element</u>	<u>Element</u>		
M	C507		DATE/TIME/PERIOD	M
			Date and/or time, or period relevant to the specified date/time/period type.	
M		2005	Date/time/period qualifier	M an..3
			Code giving specific meaning to a date, time or period.	
			171 Reference date/time	
			Date/time on which the reference was issued.	
Must Use		2380	Date/time/period	C an..35
			The value of a date, a date and time, a time or of a period in a specified representation.	
Must Use		2379	Date/time/period format qualifier	C an..3
			Specification of the representation of a date, a date and time or of a period.	
			102 CCYYMMDD	
			Calendar date: C = Century ; Y = Year ; M = Month ; D = Day.	

Group: **QTY** Segment Group 12: Quantity
Position: 0470
Group: Segment Group 8 (Line Item) Conditional (Required)
Level: 3
Usage: Conditional (Optional)
Max Use: 1
Purpose:

Segment Summary

<u>User</u>	<u>Pos.</u>	<u>Seg.</u>	<u>Name</u>	<u>Req.</u>	<u>Max.</u>	<u>Group:</u>
<u>Attribute</u>	<u>No.</u>	<u>ID</u>		<u>Des.</u>	<u>Use</u>	<u>Repeat</u>
M	0480	QTY	Quantity (70) - Last Receipt Cumulative Quantity	M		1

Segment: **QTY** **Quantity (70) - Last Receipt Cumulative Quantity**
Position: 0480 (Trigger Segment)
Group: Segment Group 12 (Quantity) Conditional (Optional)
Level: 3
Usage: Mandatory
Max Use: 1
Purpose: A segment to specify pertinent quantities which may be relating to schedule(s) and/or pattern established in the SCC/DTM segment, e.g. delivery quantity or a specified date.

Dependency Notes:

Semantic Notes:

Comments:

Notes: **Notes to Trading Partner**

This segment is used to provide the cumulative quantity received as of the last receipt date.

Data Examples

QTY+70:144000:PCE'

Data Element Summary

<u>User</u>	<u>Data</u>	<u>Component</u>	<u>Name</u>	<u>Attributes</u>
<u>Attribute</u>	<u>Element</u>	<u>Element</u>		
M	C186		QUANTITY DETAILS	M
			Quantity information in a transaction, qualified when relevant .	
M		6063	Quantity qualifier	M an..3
			Code giving specific meaning to a quantity.	
			70 Cumulative quantity received	
			Cumulative quantity of all deliveries of this article received by the buyer.	
M		6060	Quantity	M n..15
			Numeric value of a quantity.	
Must Use		6411	Measure unit qualifier	C an..3
			Indication of the unit of measurement in which weight (mass), capacity, length, area, volume or other quantity is expressed.	

Group: **QTY** Segment Group 12: Quantity
Position: 0470
Group: Segment Group 8 (Line Item) Conditional (Required)
Level: 3
Usage: Conditional (Optional)
Max Use: 1
Purpose:

Segment Summary

<u>User</u>	<u>Pos.</u>	<u>Seg.</u>	<u>Name</u>	<u>Req.</u>	<u>Max.</u>	<u>Group:</u>
<u>Attribute</u>	<u>No.</u>	<u>ID</u>		<u>Des.</u>	<u>Use</u>	<u>Repeat</u>
M	0480	QTY	Quantity (78) - Scheduled Cumulative Quantity	M	1	

Segment: **QTY** **Quantity (78) - Scheduled Cumulative Quantity**
Position: 0480 (Trigger Segment)
Group: Segment Group 12 (Quantity) Conditional (Optional)
Level: 3
Usage: Mandatory
Max Use: 1
Purpose: A segment to specify pertinent quantities which may be relating to schedule(s) and/or pattern established in the SCC/DTM segment, e.g. delivery quantity or a specified date.

Dependency Notes:

Semantic Notes:

Comments:

Notes:

Notes to Trading Partner

This segment is used to provide the scheduled cumulative quantity. This quantity will include the cumulative quantity received (QTY+70), plus any backorder quantity due (QTY+83), plus any urgent quantity due (QTY+84), plus all the new quantities due (QTY+113).

Data Examples

DTM+78:1171500:PCE'

Data Element Summary

<u>User</u>	<u>Data</u>	<u>Component</u>			<u>Attributes</u>
<u>Attribute</u>	<u>Element</u>	<u>Element</u>	<u>Name</u>		
M	C186		QUANTITY DETAILS		M
			Quantity information in a transaction, qualified when relevant .		
M		6063	Quantity qualifier		M an..3
			Code giving specific meaning to a quantity.		
			78	Cumulative quantity scheduled	
				Adding the quantity actually scheduled to previous cumulative quantity.	
M		6060	Quantity		M n..15
			Numeric value of a quantity.		
Must Use		6411	Measure unit qualifier		C an..3
			Indication of the unit of measurement in which weight (mass), capacity, length, area, volume or other quantity is expressed.		

Group: **QTY** Segment Group 12: Quantity
Position: 0470
Group: Segment Group 8 (Line Item) Conditional (Required)
Level: 3
Usage: Conditional (Optional)
Max Use: 1
Purpose:

Segment Summary

<u>User</u>	<u>Pos.</u>	<u>Seg.</u>	<u>Name</u>	<u>Req.</u>	<u>Max.</u>	<u>Group:</u>
<u>Attribute</u>	<u>No.</u>	<u>ID</u>		<u>Des.</u>	<u>Use</u>	<u>Repeat</u>
M	0480	QTY	Quantity (83) - Backorder Quantity	M	1	
Must Use	0490	SCC	Scheduling Conditions	C	1	
Must Use	0500	DTM	Date/Time/Period - Latest Delivery or Pickup Date/Time	C	1	
Must Use	0500	DTM	Date/Time/Period - Earliest Delivery or Pickup Date/Time	C	1	

Segment: **QTY** **Quantity (83) - Backorder Quantity**
Position: 0480 (Trigger Segment)
Group: Segment Group 12 (Quantity) Conditional (Optional)
Level: 3
Usage: Mandatory
Max Use: 1
Purpose: A segment to specify pertinent quantities which may be relating to schedule(s) and/or pattern established in the SCC/DTM segment, e.g. delivery quantity or a specified date.

Dependency Notes:

Semantic Notes:

Comments:

Notes: **Notes to Trading Partner**

This segment is used to provide information on any backorder quantity that is due.

Data Examples

QTY+83:36000:PCE'

Data Element Summary

<u>User</u>	<u>Data</u>	<u>Component</u>	<u>Name</u>	<u>Attributes</u>
<u>Attribute</u>	<u>Element</u>	<u>Element</u>		
M	C186		QUANTITY DETAILS Quantity information in a transaction, qualified when relevant .	M
M		6063	Quantity qualifier Code giving specific meaning to a quantity. 83 Backorder quantity	M an..3
M		6060	Quantity Numeric value of a quantity.	M n..15
Must Use		6411	Measure unit qualifier Indication of the unit of measurement in which weight (mass), capacity, length, area, volume or other quantity is expressed.	C an..3

Segment: **SCC** Scheduling Conditions
Position: 0490
Group: Segment Group 12 (Quantity) Conditional (Optional)
Level: 4
Usage: Conditional (Required)
Max Use: 1
Purpose: A segment specifying the type and status of the schedule being given, and optionally defining a pattern to be established, e.g. firm or proposed delivery schedule for a weekly pattern.

Dependency Notes:
Semantic Notes:
Comments:
Notes:

Notes to Trading Partner

This segment is used to provide the scheduling conditions.

Data Examples

SCC+1++Y::2'
 SCC+4++Y::1'
 SCC+2'
 SCC+3'

Data Element Summary

<u>User</u>	<u>Data</u>	<u>Component</u>	<u>Attributes</u>
<u>Attribute</u>	<u>Element</u>	<u>Element</u> <u>Name</u>	
M	4017	DELIVERY PLAN STATUS INDICATOR, CODED	M an..3
		Code indicating the level of commitment of schedule information.	
		1 Firm	
		2 Fab quantity	
		3 Raw quantity	
		4 Planning/forecast	
Not Used	4493	DELIVERY REQUIREMENTS, CODED	C an..3
		Indication of general instruction for delivery.	
		Refer to D.96A Data Element Dictionary for acceptable code values.	
Must Use	C329	PATTERN DESCRIPTION	C
		Shipment, delivery or production interval pattern and timing.	
C		2013 Frequency, coded	C an..3
		Code specifying interval grouping of the delivery, production, etc. of the schedule.	
		D Discrete	
		Flexible frequency according to planning process.	
		M Monthly (calendar months)	
		Code defining a forecast by calendar month(s).	
		W Weekly	
		Code defining a forecast for weekly intervals.	
		Y Daily	
		2015 Despatch pattern, coded	C an..3
		Code specifying the days/periods for routine shipments or deliveries.	
		Refer to D.96A Data Element Dictionary for acceptable code values.	

2017 Despatch pattern timing, coded **C an..3**
 Code specifying the detailed times for routine shipments or deliveries within data element 2015 Despatch pattern, coded.
 1 Pickup Dates
 2 Receiving Dates

Segment: DTM Date/Time/Period - Date/Time for FAB/RAW Quantity
Position: 0500
Group: Segment Group 12 (Quantity) Conditional (Optional)
Level: 4
Usage: Conditional (Required)
Max Use: 1
Purpose: Start date/time and End date/time

Dependency Notes:
Semantic Notes:
Comments:
Notes:

Notes to Trading Partner

This segment is used to provide the latest delivery or pickup date/time.

Data Examples

DTM+206:20140611:102'
 DTM+194:20140611:102'

Data Element Summary

<u>User</u>	<u>Data</u>	<u>Component</u>	<u>Name</u>	<u>Attributes</u>
M	C507		DATE/TIME/PERIOD	M
			Date and/or time, or period relevant to the specified date/time/period type.	
M		2005	Date/time/period qualifier	M an..3
			Code giving specific meaning to a date, time or period.	
			206 End date for FAB and RAW QTY	
			194 Start date for FAB and RAW QTY	
Must Use		2380	Date/time/period	C an..35
			The value of a date, a date and time, a time or of a period in a specified representation.	
			Notes to Trading Partner:	
			Format:	
			CCYYMMDD for non-pickup sheet suppliers	
			CCYYMMDDHHMM for pickup sheet suppliers	
Must Use		2379	Date/time/period format qualifier	C an..3
			Specification of the representation of a date, a date and time or of a period.	
			Notes to Trading Partner:	
			102 for non-pickup sheet suppliers	
			203 for pickup sheet suppliers	
			102 CCYYMMDD	
			Calendar date: C = Century ; Y = Year ; M = Month ; D = Day.	

Segment: **DTM** Date/Time/Period - Latest Delivery or Pickup Date/Time
Position: 0500
Group: Segment Group 12 (Quantity) Conditional (Optional)
Level: 4
Usage: Conditional (Required)
Max Use: 1
Purpose: A segment indicating the date/time/period details relating to the quantity and schedule details in the QTY/SCC segments. This segment may indicate date/time ranges, e.g. start and end dates for a delivery pattern, or delivery window.

Dependency Notes:

Semantic Notes:

Comments:

Notes: **Notes to Trading Partner**

This segment is used to provide the latest delivery or pickup date/time.

Data Examples

DTM+63:20140611:102'

DTM+63:201406111500:203'

Data Element Summary

<u>User</u>	<u>Data</u>	<u>Component</u>	<u>Attributes</u>
<u>Attribute</u>	<u>Element</u>	<u>Element</u> <u>Name</u>	
M	C507	DATE/TIME/PERIOD	M
		Date and/or time, or period relevant to the specified date/time/period type.	
M		2005 Date/time/period qualifier	M an..3
		Code giving specific meaning to a date, time or period.	
		63 Delivery date/time, latest	
		Date identifying a point of time after which goods shall not or will not be delivered.	
Must Use		2380 Date/time/period	C an..35
		The value of a date, a date and time, a time or of a period in a specified representation.	
		Notes to Trading Partner:	
		Format:	
		CCYYMMDD for non-pickup sheet suppliers	
		CCYYMMDDHHMM for pickup sheet suppliers	
Must Use		2379 Date/time/period format qualifier	C an..3
		Specification of the representation of a date, a date and time or of a period.	
		Notes to Trading Partner:	
		102 for non-pickup sheet suppliers	
		203 for pickup sheet suppliers	
		102 CCYYMMDD	
		Calendar date: C = Century ; Y = Year ; M = Month ; D = Day.	
		203 CCYYMMDDHHMM	
		Calendar date including time with minutes: C=Century; Y=Year; M=Month; D=Day; H=Hour; M=Minutes.	

Segment: **DTM** **Date/Time/Period - Earliest Delivery or Pickup Date/Time**
Position: 0500
Group: Segment Group 12 (Quantity) Conditional (Optional)
Level: 4
Usage: Conditional (Required)
Max Use: 1
Purpose: A segment indicating the date/time/period details relating to the quantity and schedule details in the QTY/SCC segments. This segment may indicate date/time ranges, e.g. start and end dates for a delivery pattern, or delivery window.

Dependency Notes:

Semantic Notes:

Comments:

Notes: **Notes to Trading Partner**

This segment is used to provide the earliest delivery or pickup date/time.

Data Examples

DTM+64:20140611:102'

DTM+64:201406111400:203'

Data Element Summary

<u>User</u>	<u>Data</u>	<u>Component</u>	<u>Attributes</u>
<u>Attribute</u>	<u>Element</u>	<u>Element</u> <u>Name</u>	
M	C507	DATE/TIME/PERIOD	M
		Date and/or time, or period relevant to the specified date/time/period type.	
M		2005 Date/time/period qualifier	M an..3
		Code giving specific meaning to a date, time or period.	
		64 Delivery date/time, earliest	
		Date identifying a point in time before which the goods shall not be delivered.	
Must Use		2380 Date/time/period	C an..35
		The value of a date, a date and time, a time or of a period in a specified representation.	
		Notes to Trading Partner:	
		Format:	
		CCYYMMDD for non-pickup sheet suppliers	
		CCYYMMDDHHMM for pickup sheet suppliers	
Must Use		2379 Date/time/period format qualifier	C an..3
		Specification of the representation of a date, a date and time or of a period.	
		Notes to Trading Partner:	
		102 for non-pickup sheet suppliers	
		203 for pickup sheet suppliers	
		102 CCYYMMDD	
		Calendar date: C = Century ; Y = Year ; M = Month ; D = Day.	
		203 CCYYMMDDHHMM	
		Calendar date including time with minutes: C=Century; Y=Year; M=Month; D=Day; H=Hour; M=Minutes.	

Group: **QTY** Segment Group 12: Quantity
Position: 0470
Group: Segment Group 8 (Line Item) Conditional (Required)
Level: 3
Usage: Conditional (Optional)
Max Use: 1
Purpose:

Segment Summary

<u>User</u>	<u>Pos.</u>	<u>Seg.</u>	<u>Name</u>	<u>Req.</u>	<u>Max.</u>	<u>Group:</u>
<u>Attribute</u>	<u>No.</u>	<u>ID</u>		<u>Des.</u>	<u>Use</u>	<u>Repeat</u>
M	0480	QTY	Quantity (84) - Urgent Delivery Quantity	M	1	
Must Use	0490	SCC	Scheduling Conditions	C	1	
Must Use	0500	DTM	Date/Time/Period - Latest Delivery or Pickup Date/Time	C	1	
Must Use	0500	DTM	Date/Time/Period - Earliest Delivery or Pickup Date/Time	C	1	

Segment: **QTY** Quantity (84) - Urgent Delivery Quantity
Position: 0480 (Trigger Segment)
Group: Segment Group 12 (Quantity) Conditional (Optional)
Level: 3
Usage: Mandatory
Max Use: 1
Purpose: A segment to specify pertinent quantities which may be relating to schedule(s) and/or pattern established in the SCC/DTM segment, e.g. delivery quantity or a specified date.

Dependency Notes:

Semantic Notes:

Comments:

Notes: **Notes to Trading Partner**

This segment is used to provide information on any urgent quantity that is needed.

Data Examples

QTY+84:1500:PCE'

Data Element Summary

<u>User</u>	<u>Data</u>	<u>Component</u>	<u>Name</u>	<u>Attributes</u>
<u>Attribute</u>	<u>Element</u>	<u>Element</u>		
M	C186		QUANTITY DETAILS Quantity information in a transaction, qualified when relevant .	M
M		6063	Quantity qualifier Code giving specific meaning to a quantity. 84 Urgent delivery quantity	M an..3
M		6060	Quantity Numeric value of a quantity.	M n..15
Must Use		6411	Measure unit qualifier Indication of the unit of measurement in which weight (mass), capacity, length, area, volume or other quantity is expressed.	C an..3

Segment: **SCC Scheduling Conditions**
Position: 0490
Group: Segment Group 12 (Quantity) Conditional (Optional)
Level: 4
Usage: Conditional (Required)
Max Use: 1
Purpose: A segment specifying the type and status of the schedule being given, and optionally defining a pattern to be established, e.g. firm or proposed delivery schedule for a weekly pattern.

Dependency Notes:

Semantic Notes:

Comments:

Notes: **Notes to Trading Partner**

This segment is used to provide the scheduling conditions.

Data Examples

SCC+1++Y::2'

SCC+4++Y::1'

Data Element Summary

<u>User</u>	<u>Data</u>	<u>Component</u>	<u>Name</u>	<u>Attributes</u>
<u>Attribute</u>	<u>Element</u>	<u>Element</u>		
M	4017		DELIVERY PLAN STATUS INDICATOR, CODED	M an..3
			Code indicating the level of commitment of schedule information.	
		1	Firm	
			Indicates that the scheduling information is a firm commitment.	
		4	Planning/forecast	
Not Used	4493		DELIVERY REQUIREMENTS, CODED	C an..3
			Indication of general instruction for delivery.	
			Refer to D.96A Data Element Dictionary for acceptable code values.	
Must Use	C329		PATTERN DESCRIPTION	C
			Shipment, delivery or production interval pattern and timing.	
Must Use		2013	Frequency, coded	C an..3
			Code specifying interval grouping of the delivery, production, etc. of the schedule.	
		D	Discrete	
			Flexible frequency according to planning process.	
		M	Monthly (calendar months)	
			Code defining a forecast by calendar month(s).	
		W	Weekly	
			Code defining a forecast for weekly intervals.	
		Y	Daily	
		2015	Despatch pattern, coded	C an..3
			Code specifying the days/periods for routine shipments or deliveries.	
			Refer to D.96A Data Element Dictionary for acceptable code values.	

2017 Despatch pattern timing, coded**C an..3**

Code specifying the detailed times for routine shipments or deliveries within data element 2015 Despatch pattern, coded.

- 1 Pickup Dates
- 2 Receiving Dates

Segment: **DTM** **Date/Time/Period - Latest Delivery or Pickup Date/Time**
Position: 0500
Group: Segment Group 12 (Quantity) Conditional (Optional)
Level: 4
Usage: Conditional (Required)
Max Use: 1
Purpose: A segment indicating the date/time/period details relating to the quantity and schedule details in the QTY/SCC segments. This segment may indicate date/time ranges, e.g. start and end dates for a delivery pattern, or delivery window.

Dependency Notes:

Semantic Notes:

Comments:

Notes: **Notes to Trading Partner**

This segment is used to provide the latest delivery or pickup date/time.

Data Examples

DTM+63:20140609:102'

DTM+63:201406091500:203'

Data Element Summary

<u>User</u>	<u>Data</u>	<u>Component</u>	<u>Attributes</u>
<u>Attribute</u>	<u>Element</u>	<u>Element</u> <u>Name</u>	
M	C507	DATE/TIME/PERIOD	M
		Date and/or time, or period relevant to the specified date/time/period type.	
M		2005 Date/time/period qualifier	M an..3
		Code giving specific meaning to a date, time or period.	
		63 Delivery date/time, latest	
		Date identifying a point of time after which goods shall not or will not be delivered.	
Must Use		2380 Date/time/period	C an..35
		The value of a date, a date and time, a time or of a period in a specified representation.	
		Notes to Trading Partner:	
		Format:	
		CCYYMMDD for non-pickup sheet suppliers	
		CCYYMMDDHHMM for pickup sheet suppliers	
Must Use		2379 Date/time/period format qualifier	C an..3
		Specification of the representation of a date, a date and time or of a period.	
		Notes to Trading Partner:	
		102 for non-pickup sheet suppliers	
		203 for pickup sheet suppliers	
		102 CCYYMMDD	
		Calendar date: C = Century ; Y = Year ; M = Month ; D = Day.	
		203 CCYYMMDDHHMM	
		Calendar date including time with minutes: C=Century; Y=Year; M=Month; D=Day; H=Hour; M=Minutes.	

Segment: **DTM** **Date/Time/Period - Earliest Delivery or Pickup Date/Time**
Position: 0500
Group: Segment Group 12 (Quantity) Conditional (Optional)
Level: 4
Usage: Conditional (Required)
Max Use: 1
Purpose: A segment indicating the date/time/period details relating to the quantity and schedule details in the QTY/SCC segments. This segment may indicate date/time ranges, e.g. start and end dates for a delivery pattern, or delivery window.

Dependency Notes:

Semantic Notes:

Comments:

Notes: **Notes to Trading Partner**

This segment is used to provide the earliest delivery or pickup date/time.

Data Examples

DTM+64:20140609:102'

DTM+64:201406091400:203'

Data Element Summary

<u>User</u>	<u>Data</u>	<u>Component</u>	<u>Attributes</u>
<u>Attribute</u>	<u>Element</u>	<u>Element</u> <u>Name</u>	
M	C507	DATE/TIME/PERIOD	M
		Date and/or time, or period relevant to the specified date/time/period type.	
M		2005 Date/time/period qualifier	M an..3
		Code giving specific meaning to a date, time or period.	
		64 Delivery date/time, earliest	
		Date identifying a point in time before which the goods shall not be delivered.	
Must Use		2380 Date/time/period	C an..35
		The value of a date, a date and time, a time or of a period in a specified representation.	
		Notes to Trading Partner:	
		Format:	
		CCYYMMDD for non-pickup sheet suppliers	
		CCYYMMDDHHMM for pickup sheet suppliers	
Must Use		2379 Date/time/period format qualifier	C an..3
		Specification of the representation of a date, a date and time or of a period.	
		Notes to Trading Partner:	
		102 for non-pickup sheet suppliers	
		203 for pickup sheet suppliers	
		102 CCYYMMDD	
		Calendar date: C = Century ; Y = Year ; M = Month ; D = Day.	
		203 CCYYMMDDHHMM	
		Calendar date including time with minutes: C=Century; Y=Year; M=Month; D=Day; H=Hour; M=Minutes.	

Group: **QTY** Segment Group 12: Quantity
Position: 0470
Group: Segment Group 8 (Line Item) Conditional (Required)
Level: 3
Usage: Conditional (Optional)
Max Use: 200
Purpose:

Segment Summary

<u>User</u>	<u>Pos.</u>	<u>Seg.</u>	<u>Name</u>	<u>Req.</u>	<u>Max.</u>	<u>Group:</u>
<u>Attribute</u>	<u>No.</u>	<u>ID</u>		<u>Des.</u>	<u>Use</u>	<u>Repeat</u>
M	0480	QTY	Quantity (113) - Delivery Quantity	M	1	
Must Use	0490	SCC	Scheduling Conditions	C	1	
Must Use	0500	DTM	Date/Time/Period - Latest Delivery or Pickup Date/Time	C	1	
Must Use	0500	DTM	Date/Time/Period - Earliest Delivery or Pickup Date/Time	C	1	

Segment: **SCC Scheduling Conditions**
Position: 0490
Group: Segment Group 12 (Quantity) Conditional (Optional)
Level: 4
Usage: Conditional (Required)
Max Use: 1
Purpose: A segment specifying the type and status of the schedule being given, and optionally defining a pattern to be established, e.g. firm or proposed delivery schedule for a weekly pattern.

Dependency Notes:

Semantic Notes:

Comments:

Notes: **Notes to Trading Partner**

This segment is used to provide the scheduling conditions.

Data Examples

SCC+1++Y::2'
 SCC+4++W::2'
 SCC+4++M::2'

Data Element Summary

<u>User</u>	<u>Data</u>	<u>Component</u>	<u>Attributes</u>
<u>Attribute</u>	<u>Element</u>	<u>Element</u> <u>Name</u>	
M	4017	DELIVERY PLAN STATUS INDICATOR, CODED	M an..3
		Code indicating the level of commitment of schedule information.	
		1 Firm	
		Indicates that the scheduling information is a firm commitment.	
		4 Planning/forecast	
Not Used	4493	DELIVERY REQUIREMENTS, CODED	C an..3
		Indication of general instruction for delivery.	
		Refer to D.96A Data Element Dictionary for acceptable code values.	
Must Use	C329	PATTERN DESCRIPTION	C
		Shipment, delivery or production interval pattern and timing.	
Must Use		2013 Frequency, coded	C an..3
		Code specifying interval grouping of the delivery, production, etc. of the schedule.	
		D Discrete	
		Flexible frequency according to planning process.	
		M Monthly (calendar months)	
		Code defining a forecast by calendar month(s).	
		W Weekly	
		Code defining a forecast for weekly intervals.	
		Y Daily	
		2015 Despatch pattern, coded	C an..3
		Code specifying the days/periods for routine shipments or deliveries.	
		Refer to D.96A Data Element Dictionary for acceptable code values.	
		2017 Despatch pattern timing, coded	C an..3
		Code specifying the detailed times for routine shipments or deliveries within data element 2015 Despatch pattern, coded.	

- 1 Pickup Dates
- 2 Receiving Dates

Segment: **DTM** **Date/Time/Period - Latest Delivery or Pickup Date/Time**
Position: 0500
Group: Segment Group 12 (Quantity) Conditional (Optional)
Level: 4
Usage: Conditional (Required)
Max Use: 1
Purpose: A segment indicating the date/time/period details relating to the quantity and schedule details in the QTY/SCC segments. This segment may indicate date/time ranges, e.g. start and end dates for a delivery pattern, or delivery window.

Dependency Notes:

Semantic Notes:

Comments:

Notes: **Notes to Trading Partner**

This segment is used to provide the latest delivery or pickup date/time.

Data Examples

DTM+63:20140617:102'

DTM+63:201406171500:203'

Data Element Summary

<u>User</u>	<u>Data</u>	<u>Component</u>	<u>Attributes</u>
<u>Attribute</u>	<u>Element</u>	<u>Element</u> <u>Name</u>	
M	C507	DATE/TIME/PERIOD	M
		Date and/or time, or period relevant to the specified date/time/period type.	
M		2005 Date/time/period qualifier	M an..3
		Code giving specific meaning to a date, time or period.	
		63 Delivery date/time, latest	
		Date identifying a point of time after which goods shall not or will not be delivered.	
Must Use		2380 Date/time/period	C an..35
		The value of a date, a date and time, a time or of a period in a specified representation.	
		Notes to Trading Partner:	
		Format:	
		CCYYMMDD for non-pickup sheet suppliers	
		CCYYMMDDHHMM for pickup sheet suppliers	
Must Use		2379 Date/time/period format qualifier	C an..3
		Specification of the representation of a date, a date and time or of a period.	
		Notes to Trading Partner:	
		102 for non-pickup sheet suppliers	
		203 for pickup sheet suppliers	
		102 CCYYMMDD	
		Calendar date: C = Century ; Y = Year ; M = Month ; D = Day.	
		203 CCYYMMDDHHMM	
		Calendar date including time with minutes: C=Century; Y=Year; M=Month; D=Day; H=Hour; M=Minutes.	

Segment: **DTM** **Date/Time/Period - Earliest Delivery or Pickup Date/Time**
Position: 0500
Group: Segment Group 12 (Quantity) Conditional (Optional)
Level: 4
Usage: Conditional (Required)
Max Use: 1
Purpose: A segment indicating the date/time/period details relating to the quantity and schedule details in the QTY/SCC segments. This segment may indicate date/time ranges, e.g. start and end dates for a delivery pattern, or delivery window.

Dependency Notes:

Semantic Notes:

Comments:

Notes: **Notes to Trading Partner**

This segment is used to provide the earliest delivery or pickup date/time.

Data Examples

DTM+64:20140617:102'

DTM+64:201406171400:203'

Data Element Summary

<u>User</u>	<u>Data</u>	<u>Component</u>	<u>Name</u>	<u>Attributes</u>
<u>Attribute</u>	<u>Element</u>	<u>Element</u>		
M	C507		DATE/TIME/PERIOD	M
			Date and/or time, or period relevant to the specified date/time/period type.	
M		2005	Date/time/period qualifier	M an..3
			Code giving specific meaning to a date, time or period.	
		64	Delivery date/time, earliest	
			Date identifying a point in time before which the goods shall not be delivered.	
Must Use		2380	Date/time/period	C an..35
			The value of a date, a date and time, a time or of a period in a specified representation.	
			Notes to Trading Partner:	
			Format:	
			CCYYMMDD for non-pickup sheet suppliers	
			CCYYMMDDHHMM for pickup sheet suppliers	
Must Use		2379	Date/time/period format qualifier	C an..3
			Specification of the representation of a date, a date and time or of a period.	
			Notes to Trading Partner:	
			102 for non-pickup sheet suppliers	
			203 for pickup sheet suppliers	
		102	CCYYMMDD	
			Calendar date: C = Century ; Y = Year ; M = Month ; D = Day.	
		203	CCYYMMDDHHMM	
			Calendar date including time with minutes: C=Century; Y=Year; M=Month; D=Day; H=Hour; M=Minutes.	

Group: **PAC** Segment Group 14: Package
Position: 0540
Group: Segment Group 8 (Line Item) Conditional (Required)
Level: 3
Usage: Conditional (Optional)
Max Use: 50
Purpose: A group of segments identifying the packaging, physical dimensions, and marks and numbers for goods referenced in the line item to be delivered.

Segment Summary

<u>Attribute</u>	<u>Pos. No.</u>	<u>Seg. ID</u>	<u>Name</u>	<u>Req. Des.</u>	<u>Max. Use</u>	<u>Group: Repeat</u>
M	0550	PAC	Package	M	1	
Must Use	0570	QTY	Quantity (52) - Per Pack	C	1	

Segment: **PAC Package**
Position: 0550 (Trigger Segment)
Group: Segment Group 14 (Package) Conditional (Optional)
Level: 3
Usage: Mandatory
Max Use: 1
Purpose: A segment specifying the number of package units and the physical type of packaging for the line item, e.g. pallet.

Dependency Notes:

Semantic Notes:

Comments:

Notes:

Notes to Trading Partner

This segment is used to provide the packaging details. The supplier must use the specified packaging when shipping.

Data Examples

PAC+++EXP111111111111265::92+F:ONE-WAY-CARTON:SK:EA'

Data Element Summary

<u>User Attribute</u>	<u>Data Element</u>	<u>Component Element</u>	<u>Name</u>	<u>Attributes</u>
	7224		NUMBER OF PACKAGES Number of individual parts of a shipment either unpacked, or packed in such a way that they cannot be divided without first undoing the packing.	C n..8
Must Use	C531		PACKAGING DETAILS Packaging level and details, terms and conditions.	C
Must Use		7075	Packaging level, coded Indication of level of packaging specified.	C an..3
			1 Inner Level of packing, if it exists, that is immediately subordinate to the intermediate packaging level.	
			3 Outer For packed merchandise, outermost level of packaging for a shipment.	
		7233	Packaging related information, coded Code giving packaging, handling and marking related information. Refer to D.96A Data Element Dictionary for acceptable code values.	C an..3
		7073	Packaging terms and conditions, coded Code identifying packaging terms and conditions. Refer to D.96A Data Element Dictionary for acceptable code values.	C an..3
Must Use	C202		PACKAGE TYPE Type of package by name or by code from a specified source.	C
Must Use		7065	Type of packages identification Coded description of the form in which goods are presented.	C an..17
			Notes to Trading Partner: Adient identification number for the packaging material to be used for shipping the item	
Not Used		1131	Code list qualifier Identification of a code list. Refer to D.96A Data Element Dictionary for acceptable code values.	C an..3

Must Use		3055 Code list responsible agency, coded	C an..3
		Code identifying the agency responsible for a code list. 92 Assigned by buyer or buyer's agent	
Not Used		7064 Type of packages	C an..35
		Description of the form in which goods are presented.	
Must Use	C402	PACKAGE TYPE IDENTIFICATION	C
		Identification of the form in which goods are described.	
M		7077 Item description type, coded	M an..3
		Code indicating the format of a description. F Free-form	
M		7064 Type of packages	M an..35
		Description of the form in which goods are presented.	
		Notes to Trading Partner:	
		Description of Adient packaging type	
Must Use		7143 Item number type, coded	C an..3
		Identification of the type of item number. SK SKU (Stock keeping unit) Reference number of a stock keeping unit.	
Must Use		7064 Type of packages	C an..35
		Description of the form in which goods are presented.	
		Notes to Trading Partner:	
		Unit of measure of Handling Unit	
Not Used		7143 Item number type, coded	C an..3
		Identification of the type of item number. Refer to D.96A Data Element Dictionary for acceptable code values.	
	C532	RETURNABLE PACKAGE DETAILS	C
		Indication of responsibility for payment and load contents of returnable packages.	
		8395 Returnable package freight payment responsibility, coded	C an..3
		To indicate responsibility for payment of return freight charges for packaging that is returnable. Refer to D.96A Data Element Dictionary for acceptable code values.	
Not Used		8393 Returnable package load contents, coded	C an..3
		To indicate the composition of goods loaded into a returnable package. Refer to D.96A Data Element Dictionary for acceptable code values.	

Segment: **QTY** Quantity (52) - Per Pack
Position: 0570
Group: Segment Group 14 (Package) Conditional (Optional)
Level: 4
Usage: Conditional (Required)
Max Use: 1
Purpose: A segment to specify pertinent quantities relating to the physical units (packages) described in the PAC segment.

Dependency Notes:

Semantic Notes:

Comments:

Notes:

Notes to Trading Partner

This segment is used to provide the quantity per pack information.

Data Examples

QTY+52:1500'

Data Element Summary

<u>User</u>	<u>Data</u>	<u>Component</u>	<u>Name</u>	<u>Attributes</u>
<u>Attribute</u>	<u>Element</u>	<u>Element</u>		
M	C186		QUANTITY DETAILS Quantity information in a transaction, qualified when relevant .	M
M		6063	Quantity qualifier Code giving specific meaning to a quantity. 52 Quantity per pack	M an..3
M		6060	Quantity Numeric value of a quantity.	M n..15
Must Use		6411	Measure unit qualifier Indication of the unit of measurement in which weight (mass), capacity, length, area, volume or other quantity is expressed. Notes to Trading Partner: Item unit of measure which should be returned in the Despatch Advice	C an..3

Segment: **UNS** Section Control
Position: 1220
Group:
Level: 0
Usage: Mandatory
Max Use: 1
Purpose: A service segment placed at the start of the summary section to avoid segment collision.
Dependency Notes:
Semantic Notes:
Comments:
Notes: **Notes to Trading Partner**

This segment is used to separate the detail and summary sections of the message.

Data Examples

UNS+S'

Data Element Summary

<u>User</u>	<u>Data</u>	<u>Component</u>	<u>Name</u>	<u>Attributes</u>
M	0081		SECTION IDENTIFIER	M a1
			A character identifying the next section in a message.	
		S	Detail/summary section separation	
			To qualify the segment UNS, when separating the detail from the summary section of a message.	

Segment: **UNT** Message Trailer
Position: 1250
Group:
Level: 0
Usage: Mandatory
Max Use: 1
Purpose: A service segment ending a message, giving the total number of segments in the message and the control reference number of the message.

Dependency Notes:

Semantic Notes:

Comments:

Notes: **Notes to Trading Partner**

This segment is used to end the DELFOR message.

Data Examples

UNT+78+56200001'

Data Element Summary

<u>User</u>	<u>Data</u>	<u>Component</u>	<u>Name</u>	<u>Attributes</u>
<u>Attribute</u>	<u>Element</u>	<u>Element</u>		
M	0074		NUMBER OF SEGMENTS IN A MESSAGE Control count of number of segments in a message.	M n..6
M	0062		MESSAGE REFERENCE NUMBER Unique message reference assigned by the sender.	M an..14

Notes to Trading Partner:

This value must match what is sent in the UNH_0062 element.

DELFOR Delivery Schedule Examples

Example 1 – One DELFOR message in one interchange – one Adient item per DELFOR

```

UNB+UNOA:3+SENDER-ID+RECEIVER-ID+140607:0142+562++DELFOR'
UNG+DELFOR+SNDRGRPID+RCVRGRPID+140607:0142+562+UN+D:96A'
UNH+56200001+DELFOR:D:96A:UN'
BGM+241+37+9'
DTM+137:20140607:102'
DTM+158:20140609:102'
DTM+159:20150930:102'
RFF+ADE:0000369145'
NAD+SE+369145::92++SELLER NAME'
NAD+BY+1449::92++ADIENT PLANT NAME'
UNS+D'
NAD+CN+1449::92++ADIENT SHIP-TO NAME'
LIN+++317923.61:IN'
PIA+1+CR153:SA+001:EC'
IMD+++:::FEDER OMEGA'
LOC+11+RH1::92'
LOC+159+HW10::92'
DTM+257:20140607:102'
DTM+153:20140707:102'
DTM+154:20140806:102'
RFF+ON:0055056244:00001'
QTY+12:36000:PCE'
RFF+AAK:4196347'
DTM+171:20140605:102'
QTY+12:72000:PCE'
RFF+AAK:4196346'
DTM+171:20140602:102'
QTY+12:36000:PCE'
RFF+AAK:4196345'
DTM+171:20140529:102'
QTY+70:144000:PCE'
QTY+78:1171500:PCE'
QTY+83:36000:PCE'
SCC+1++Y::2'
DTM+63:20140611:102'
DTM+64:20140611:102'
QTY+84:1500:PCE'
SCC+1++Y::2'
DTM+63:20140609:102'
DTM+64:20140609:102'

```

Information for up to 3 last receipts may be sent

Cumulative quantity received as of last receipt
Scheduled cumulative quantity

Backorder Quantity due

Urgent delivery quantity due – not previously released

QTY+113:36000:PCE'
 SCC+1++Y::2'
 DTM+63:20140617:102'
 DTM+64:20140617:102'
 QTY+113:252000:PCE'
 SCC+4++M::2'
 DTM+63:20141130:102'
 DTM+64:20141101:102'
 QTY+113:234000:PCE'
 SCC+4++M::2'
 DTM+63:20150331:102'
 DTM+64:20150301:102'
 QTY+113:90000:PCE'
 SCC+4++M::2'
 DTM+63:20150430:102'
 DTM+64:20150401:102'
 QTY+113:72000:PCE'
 SCC+4++M::2'
 DTM+63:20150531:102'
 DTM+64:20150501:102'
 QTY+113:90000:PCE'
 SCC+4++M::2'
 DTM+63:20150630:102'
 DTM+64:20150601:102'
 QTY+113:90000:PCE'
 SCC+4++M::2'
 DTM+63:20150731:102'
 DTM+64:20150701:102'
 QTY+113:36000:PCE'
 SCC+4++M::2'
 DTM+63:20150831:102'
 DTM+64:20150801:102'
 QTY+113:90000:PCE'
 SCC+4++M::2'
 DTM+63:20150930:102'
 DTM+64:20150901:102'

Delivery or pickup quantities due

PAC+++EXP1111111111265::92+F:ONE-WAY-CARTON:SK:EA
 QTY+52:1500'
 UNS+S'
 UNT+78+56200001'
 UNE+1+ 562'
 UNZ+1+562'

Packaging type required
 Quantity per pack

Example 2 – Multiple DELFOR messages in one interchange – one Adient item per DELFOR

UNB+UNOA:3+SENDER-ID+RECEIVER-ID+140607:0142+384++DELFOR'
UNH+38400001+DELFOR:D:96A:UN'
BGM+241+23+9'
DTM+137:20140607:102'
RFF+ADE:0000364904'
NAD+SE+364904::92++SELLER NAME'
NAD+BY+1449::92++ADIENT PLANT NAME'
UNS+D'
NAD+CN+1449::92++ADIENT SHIP-TO NAME'
LIN+++82084957-3.61:IN'
IMD+++::CLAMP'
LOC+11+WW1::92'
LOC+159+HW10::92'
DTM+257:20140607:102'
DTM+153:20140707:102'
DTM+154:20140806:102'
RFF+ON:0055058341:00001'
QTY+12:1000:PCE'
RFF+AAK:758379'
DTM+171:20140606:102'
QTY+70:84500:PCE'
QTY+78:228000:PCE'
QTY+113:6500:PCE'
SCC+1++Y::1'
DTM+63:201406110130:203'
DTM+64:201406110100:203'
QTY+113:1500:PCE'
SCC+1++Y::1'
DTM+63:201406130200:203'
DTM+64:201406130100:203'
QTY+113:7500:PCE'
SCC+1++Y::1'
DTM+63:201406170400:203'
DTM+64:201406170300:203'
QTY+113:1500:PCE'
SCC+1++Y::1'
DTM+63:201406231200:203'
DTM+64:201406231100:203'
QTY+113:6000:PCE'
SCC+1++Y::1'
DTM+63:201406251430:203'
DTM+64:201406251400:203'
QTY+113:5500:PCE'
SCC+4++W'
DTM+63:201407061500:203'
DTM+64:201406301500:203'
QTY+113:6500:PCE'

SCC+4++W::1'
DTM+63:201407131600:203'
DTM+64:201407071500:203'
QTY+113:6500:PCE'
SCC+4++W::1'
DTM+63:201407201345:203'
DTM+64:201407141300:203'
QTY+113:6500:PCE'
SCC+4++W::1'
DTM+63:201407271700:203'
DTM+64:201407211600:203'
QTY+113:6000:PCE'
SCC+4++W::1'
DTM+63:201408031800:203'
DTM+64:201407281800:203'
QTY+113:6000:PCE'
SCC+4++W::1'
DTM+63:201408101900:203'
DTM+64:201408041900:203'
QTY+113:7500:PCE'
SCC+4++W::1'
DTM+63:201408172000:203'
DTM+64:201408112000:203'
QTY+113:7500:PCE'
SCC+4++W::1'
DTM+63:201408242030:203'
DTM+64:201408182000:203'
QTY+113:25500:PCE'
SCC+4++W::1'
DTM+63:201408312130:203'
DTM+64:201408252045:203'
QTY+113:12000:PCE'
SCC+4++M::1'
DTM+63:201409302200:203'
DTM+64:201409012100:203'
QTY+113:13000:PCE'
SCC+4++M::1'
DTM+63:201410312359:203'
DTM+64:201410012300:203'
QTY+113:18000:PCE'
SCC+4++M::1'
DTM+63:201411300045:203'
DTM+64:201411010030:203'
PAC+++EXP111111111111273::92+F:STEIGE 305*215*140 MM:SK:EA'
QTY+52:500'
UNS+S'
UNT+93+38400001'
UNH+38400002+DELFOR:D:96A:UN'
BGM+241+23+9'
DTM+137:20140607:102'

RFF+ADE:0000364904'
NAD+SE+364904::92++SELLER NAME'
NAD+BY+1449::92++ADIENT PLANT NAME'
UNS+D'
NAD+CN+1449::92 ADIENT SHIP-TO NAME '
LIN+++82084957-3.64:IN'
IMD+++::CLAMP EU'
LOC+11+WW1::92'
LOC+159+HW10::92'
DTM+257:10240607:102'
DTM+153:10240707:102'
DTM+154:10240806:102'
RFF+ON:0055058341:00002'
QTY+12:10000:PCE'
RFF+AAK:756698'
DTM+171:10240602:102'
QTY+70:64500:PCE'
QTY+78:162000:PCE'
QTY+113:10000:PCE'
SCC+1++Y::2'
DTM+63:10240612:102'
DTM+64:10240612:102'
QTY+113:10000:PCE'
SCC+1++Y::2'
DTM+63:10240701:102'
DTM+64:10240701:102'
QTY+113:8000:PCE'
SCC+1++Y::2'
DTM+63:10240711:102'
DTM+64:10240711:102'
QTY+113:8000:PCE'
SCC+1++Y::2'
DTM+63:10240905:102'
DTM+64:10240905:102'
QTY+113:13000:PCE'
SCC+4++M::2'
DTM+63:10241031:102'
DTM+64:10241001:102'
QTY+113:23000:PCE'
SCC+4++M::2'
DTM+63:10241130:102'
DTM+64:10241101:102'
QTY+113:25500:PCE'
SCC+4++M::2'
DTM+63:10241231:102'
DTM+64:10241201:102'
PAC+++EXP1111111111273::92+F:STEIGE 305*215*140 MM:SK:EA'
QTY+52:500'
UNS+S'
UNT+53+38400002'
UNZ+2+384'